



Chase the Ace Version 1.1



More than just BINGO ! Introducing a creative new method to manage your Chase the Ace (or Queen of Hearts) event.



Bingo Rose has responded to customer calls to design an effective tool to facilitate the execution of a secure Chase the Ace (also known as Queen of Hearts, Crown the King, and Jig the Joker) charity event.

Take your Chase the Ace event to a new level of sophistication and security!

Discover Chase the Ace. Professionally and affordably designed with flexibility to meet the needs of your

organization !

Bingo Rose is proud of its commitment to design excellence and customer service.

Our customers value the attention to detail incorporated into each program's design. Support questions are responded to quickly and effectively. The feedback from you, the front line of the software usage, is seriously considered and instrumental to future program development. Our software is created to do what you would program it to do if you had the necessary time and programming skills. We have very happy customers on six continents!

Version 1.1 released December 2018



We strive to document our software as clearly as possible. However, if you don't understand something about our software, or would like to find out how it can be set up to best meet your particular environment's needs, we would love to hear from you.

Seasonal contact details are available on the <http://www.Bingo Rose.biz> website.



The Chase the Ace software, our newest product, offers these valuable features:

- Optimized for 1366 X 768 screen resolution.
- Uncluttered and visually appealing screen layout.
- Easy access to user setup.
- Main screen customizable display colours for added optimization.
- User customizable voice files.
- Show or hide miscellaneous screen elements.
- Prominent user logo area makes the software look proprietary.
- Advertisement / sponsor recognition display capability.
- Extra main screen display space allocated for special needs.
- Ability to modify game name elements on main screen.
- Flexibility to conduct your Chase the Ace event in creative new ways.
- Means to eliminate concerns over public safety and lack of facilities due to large crowds.
- Hands-free selection of card.
- Popup advertisement / audience participation feature.
- Tamper-free deck shuffling / card concealment.
- Built-in security features.
- Added Concentration mind stimulation utility.

Bingo Hall Plus - Our flagship product

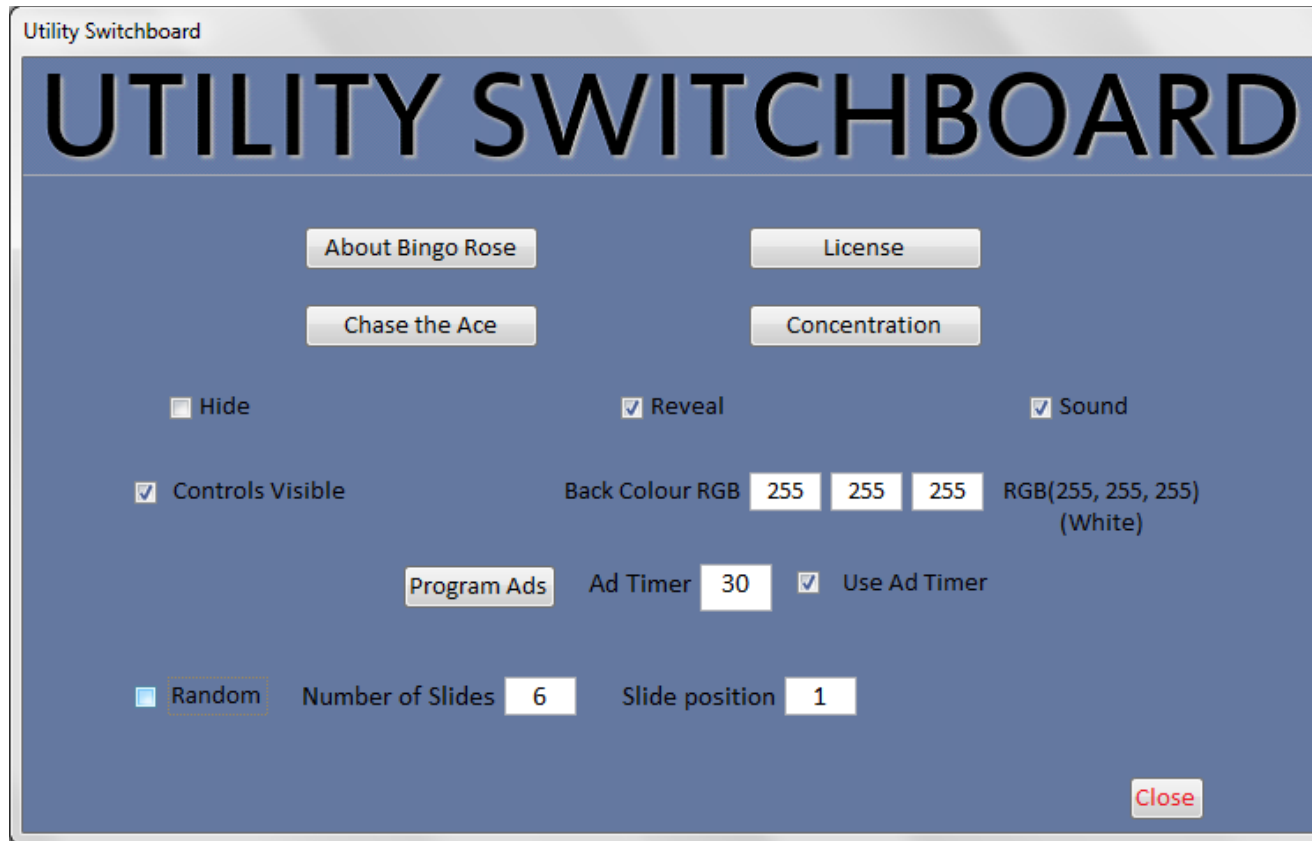


AFFORDABLE SOFTWARE SOLUTIONS
FOR BINGO ENTERTAINMENT

Most organizations already have the essential hardware to operate a successful Chase the Ace event. Simply connect your laptop to a large screen TV (or projector capable of a minimum 1366 X 768 screen resolution) for a Chase the Ace experience like no other.

UTILITY SWITCHBOARD

The Utility Switchboard – Setup to meet your needs



The Utility Switchboard is accessed by double-clicking the corporate logo area at the top left side of the main screen.

This logo, a 300X150px jpg type image file, can be customized to give the software a proprietary look by modifying the C:\Chase the Ace\Images\corplogo.jpg file.



The Bingo Rose splash screen displays when the software is launched. It is also accessible by selecting the About Bingo Rose button on the Utility Switchboard or by double-clicking the Bingo Rose logo on the main screen.



are experiencing.

The Chase the Ace software is licensed for use by a single Organization. The information provided at time of purchase is used to create the unique license detail to enter into this screen to register the Organization as the sole authorized user. The first time the software is used, this registration screen will appear. It can also be accessed by selecting the License button on the Utility Switchboard.

The Organization Name provided will appear in the top banner of the software.

The screenshot shows the 'LICENSE REGISTRATION' screen. At the top, it says 'BINGO ROSE LICENSE'. Below this, there are two main sections. The first section is labeled 'Organization' and contains a text input field with the placeholder text 'Your registered Organization Name'. Below the field, a red message reads: 'Enter the Organization name exactly as listed in the email message sent to you following purchase.' The second section is labeled 'License' and contains a text input field with the placeholder text 'License provided'. Below the field, a red message reads: 'Enter the License number exactly as listed in the email message sent to you following purchase.' Further down, another red message states: 'Failure to enter the Organization Name and the License number as listed in the email message sent to you following purchase will result in denial of access to this Chase the Ace program.' At the bottom, there is a final red message: 'If the Organization Name in that email message is incorrect, please contact the vendor for remedial options.' At the very bottom of the screen, there are two buttons: 'Test License' on the left and 'Register' on the right.

From the Utility Switchboard, you can select between the two separate programs contained in the software, Chase the Ace (the main program) and Concentration.

The Hide and Reveal checkboxes control which features of the program are available for use so that inappropriate display of underlying detail can be avoided. Their use is discussed later in this document.

The Sound checkbox manages whether or not the user wishes that the programmed calling of the cards or silent operation (full voice control over the Chase the Ace event) be used. All sound files associated with the program are located in the C:\Chase the Ace\sound folder. These wav files can be modified by the user if required, as long as the file names and format are maintained.

The Controls Visible checkbox manages whether or not the program's controls are visible. Removing the check from this checkbox hides these controls and eliminates the possibility that the program is accidentally shut down with a misguided click of the mouse. The preferred method of terminating the program is by selecting the Exit button from the main screen.



The default white background of the main screen, represented as the RGB value of 255, 255, 255, can also be modified as required to acquire that special appearance that best reflects your organization. After any of the 3 Back Colour RGB values are changed, the colour on the main screen will reflect that change. This new setting will be stored in the program as the default background colour until changed.

You can take advantage of available screen space to promote event sponsors, display advertisement, or other creative uses by creating 630 X 135 dimension image files in the C:\Chase the Ace\Ads folder. (Further details about the Advertisement feature and cause graphic display are available later in this document.)

See the Pops section below for another creative way to make your event exciting.

MAIN SCREEN

The Chase the Ace Main Screen – Cards in play

BINGO ROSE software: Chase the Ace license - Organization Name



CHASE THE ACE

WHAT'S YOUR CAUSE ?
— YOUR FUNDRAISER —
— OUR SOFTWARE —



Draw date: Enter a date
Jackpot: \$25,000



A♣	2♣	3♣	4♣	5♣	6♣	7♣	8♣	9♣	10♣	J♣	Q♣	K♣
A♦	2♦	3♦	4♦	5♦	6♦	7♦	8♦	9♦	10♦	J♦	Q♦	K♦
A♠	2♠	3♠	4♠	5♠	6♠	7♠	8♠	9♠	10♠	J♠	Q♠	K♠
A♥	2♥	3♥	4♥	5♥	6♥	7♥	8♥	9♥	10♥	J♥	Q♥	K♥



Quality Software Solutions



GOD BLESS AMERICA

JPG type files with 630 X 135 dimensions stored in the C:\Chase the Ace\Ads directory will be available for use with the Advertisement feature in the Chase the Ace program.



Exit

Reset

Chase

CHASE THE ACE



The Chase the Ace software main screen can be customized to meet your organization's needs via the ability to modify the corporate logo, Chase the Ace banner, cause graphic, and default card called image.

The corporate logo area was discussed above.

The default card called image (right) that displays at the right side of the main screen is the 229 X 427 px C:\Chase the Ace\Images\chase the ace.jpg image file. You can modify it to reflect an alternate name your organization uses to operate your Chase the Ace event.

Similarly, the 570 X 89 px Chase the Ace banner (below) that appears at the top of the main screen can also be modified to meet your preference.



The cause graphic (right) that appears at the top right of main screen draws in the 420 X 150 px C:\Chase the Ace\Images\cause.jpg file. If you do not wish to display a graphic, ensure that the cause.jpg file is modified to a blank image of the same colour as your desired main screen background.



The Chase the Ace software also allows you to prominently display graphics at the bottom center of the main screen that were designed for Advertisement or Sponsor appreciation. This feature can be turned off if desired by un-checking the Use Ad Timer checkbox. Controls for setup of this utility are available on the Utility Switchboard.

Ad Plan

Advertisement / Sponsor Appreciation Scheduling

Index	External File name	Second count
1	proudly canadian	30
2	support our troops	30
3	bingo balls	30
4	god bless america	30
5	happy birthday	30
6	happy easter	30
7	happy halloween	30
8	happy new year	30
9	happy st patricks day	30
10	happy thanksgiving	30
11	merry christmas	30
12	proudly canadian	30
13	support our troops	30
14	bingo balls	30
15	god bless america	30
16	happy birthday	30
17	happy new year	30
18	merry christmas	30
19	happy thanksgiving	30
20	template	30

Close

The Ad Plan utility is accessed by selecting the Program Ads button on the Utility Switchboard. The 1 through 20 Indexes specify the sequence that ads will display in rotation. All .jpg type files stored in the C:\Chase the Ace\Ads folder will be available from the External File name dropdowns. Each ad will be displayed for the number of seconds specified in the Second count column. If no value is set, the default Ad Timer second count will be used. Similarly, if no External File Name is entered, the 'no ad' value will be defaulted to.

Note that these .jpg type files must be 630 X 135 px in dimension. File names cannot exceed 25 characters in length.

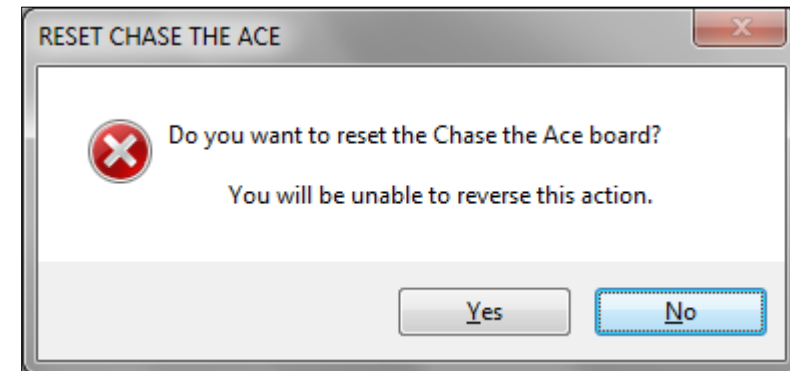
The program installs a no ad.jpg file that can be used if you wish to not display an ad anywhere in the rotation. A template.jpg file is also available to get you started with ad creation. We recommend that you do not delete these installed files.

Ad rotation will pause whenever the Utility Switchboard is open. When the Ad Plan form is closed, ad rotation will resume with the first ad display.

The Chase the Ace software allows for all 52 cards in the deck to display, as well as two Jokers. Clicking on any large card display will cause the smaller card to display, and vice versa. Any cards displayed in their smaller size format are removed from the deck. (Cards may also be removed from the deck in the 'Chase' screen discussed below.) The software retains this information when it is closed and restores the same screen when reopened.

To maintain security of the cards in play within the software, any time a card on the main screen is changed from the smaller card to the larger card, the deck is automatically shuffled when the Chase button is selected.

The Reset button will return all cards to their large card display. A warning message will be displayed to provide an opportunity to abandon reset should that button have been incorrectly selected.





Prior to selecting the Chase button, confirm that all cards available in this session of the Chase the Ace event are displayed with their larger card display.


The Chase the Ace Main Screen – Card selection

When the Chase button is selected, a new screen will display (below) that hides all of those cards that were in the large card display behind numbers. If the Reveal button is selected, you have the opportunity to once again confirm that all cards in play for this session of the Chase the Ace event are available. To re-hide the cards behind the numbers, select the Cover button.

BINGO ROSE: Chase the Ace



CHASE THE ACE





WHAT'S YOUR CAUSE ?
— YOUR FUNDRAISER —
— OUR SOFTWARE —

Draw date: Enter a date
Jackpot: \$25,000



1	2	4	6	7	8	9	11				
14	15	17	18	19	20	21	22	23	24	25	26
	28	30		34	35		37	38	39		
40		42	43	44	45	47	49	51	52		



JPG type files with 630 X 135 dimensions stored in the C:\Chase the Ace\Ads directory will be available for use with the Advertisement feature in the Chase the Ace program.



CHASE THE ACE

53

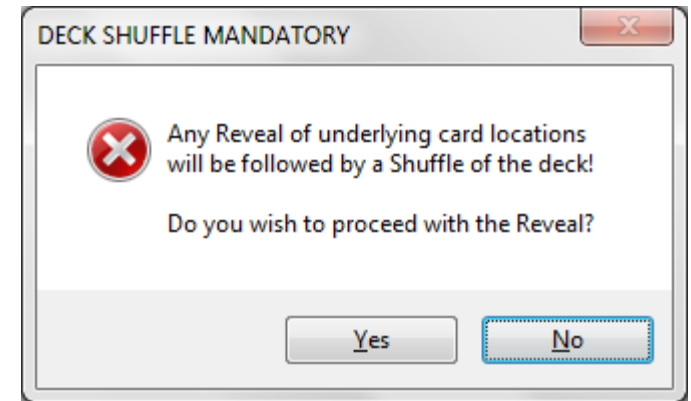
Reveal

Update

Shuffle



NOTE: To maintain security of cards in play, a mandatory shuffle of the deck to reposition the cards in play will be executed automatically following any Reveal. (You will receive a prompt before any Reveal is executed to confirm you wish to perform a Reveal.)



A patron in search of the Ace of Spades (or alternate winning card) must simply identify which of the available numbers on this screen conceals that card. When the individual responsible for operation of the software selects that number with a click of the mouse, the underlying card is displayed, the large card display at the right of the screen displays a larger representation of the underlying card selected, and if the sound feature is selected on the Utility Switchboard, that card will be called by the software.

Should you wish to allow for continued efforts to expose a winning card (such as for runner up prize distribution purposes), simply select other numbers requested by patrons.

Any individual card that is exposed can be re-hidden with a single click on that card.

If the Hide checkbox on the Utility Switchboard is unchecked, the Hide button will display at the bottom of the screen. Selecting that button will re-hide all cards exposed.

To maintain the security of the cards in play, any time that an exposed card is re-hidden, the "SECURITY HAS BEEN COMPROMISED" indicator will display. A shuffle of the deck is mandatory to maintain integrity of the software. This can be accomplished manually by selecting the Shuffle button, or, it will be performed automatically the next time this screen is opened.

**SECURITY HAS BEEN
COMPROMISED**

When this screen is closed by selecting the Update button, the software is updated to remove any visible cards from the list of cards in play. (Note that you must select this button to return to the screen that the program Exit button resides on.)

Pops

Added in Version 1.1 is the ability to POP a window that will display your message. This can be an advertisement from one of your sponsors, a cue to patrons that they can do something to win a prize, recognition of an accomplishment or a special occasion, or any other creative idea.

The 1120 X 600 dimension jpg type Pop files are created in the C:\Chase the Ace\Pops folder and named in the number sequence you wish for them to be displayed.

The number of slides you have created sequentially numbered starting at 1 is entered in the Slides textbox on the Utility Switchboard. If the file is not found in the Pops folder, the template.jpg file will be displayed (and as such the template.jpg file must not be renamed nor removed from the Pops folder).

The first slide to start the sequential rotation can be set in the Slide position text box on the Utility Switchboard.

You can also set the images to popup in random order by placing a check mark in the Random checkbox.

The image below displays some ideas for how this feature can be used.

DO THIS
TO WIN



FIRST PERSON
TO HIGH FIVE
THE CALLER



Your Charity



Wins one FREE
draft beer !!!

DO THIS
TO WIN



FIRST PERSON
TO **YELL**
Merry Christmas

CHARITABLE
Foundation



Wins 10
delicious
Wings

THANK YOU
FOR YOUR
GENEROUS
SUPPORT



FINS



FRIENDS IN
NEED SERVICES

DO THIS
TO WIN



THE FIRST PERSON TO
GIVE ME EXACTLY 16 CENTS



penny
1 cent



nickel
5 cents



dime
10 cents

Wine About It



WINE BAR

WINS ...
ONE BOTTLE
OF RED WINE



*Happy
New Year!*
2019



Congratulations **NICE GOING!**
GREAT! *Way to Go!*
Yea! **FELICITATIONS**
CHEERS *TAKE A* **BEST**
BOW! **WISHES!**

The image below represents five areas of the main screen that can be modified by the user.

- The corporate logo (top left) draws in the 300 X 150 px C:\Chase the Ace\Images\corplogo.jpg file.
- The Queen of Hearts banner (top center) draws in the 570 X 89 px C:\Chase the Ace\Images\chase the ace banner.jpg file.
- The cause graphic (top right) draws in the 420 X 150 px C:\Chase the Ace\Images\cause.jpg file.
- The large Queen of Hearts graphic (center right) draws in the 229 X 427 px C:\Chase the Ace\Images\chase the ace.jpg file.
- The Advertisement / Sponsor recognition feature (bottom center) is discussed above.



Installed with the software for your convenience (C:\Chase the Ace\Images folder) are the three graphics related to Queen of Hearts should they meet your needs. To effect the changes reflected in the image above related to the Queen of Hearts, rename the installed corplogo.jpg, chase the ace banner.jpg, and the chase the ace.jpg files for backup purposes should you decide to return to the original look. Then rename the provided Queen of Hearts graphics files as follows:



- corplogo Queen of Hearts.jpg = corplogo.jpg;
- chase the ace banner Queen of Hearts.jpg = chase the ace banner.jpg; and
- chase the ace Queen of Hearts.jpg = chase the ace.jpg.

.....
One way to play the game is to sell tickets that require a number from 1 to 54 be selected. As such, the number to expose will already be determined should the patron making the selection not be present / available. If that number is not available onscreen, simply select Shuffle until it is available or have a guiding rule such as the next available higher number will be substituted.
.....


CONCENTRATION


The Concentration Utility – Exercise your brain

BINGO ROSE software: Chase the Ace license - Organization Name



1	2	3	4	5	6	7	8	9	10	11	12	13
14	15	16	17	18	19	20	21	22	23	24	25	26
27	28	29	30	31	32	33	34	35	36	37	38	39
40	41	42	43	44	45	46	47	48	49	50	51	52



ExitChase the AceRemoveHideShuffle

Concentration is a separate utility in the Chase the Ace software. The object of the game is to turn over pairs of matching cards from those cards that remain. Concentration can be played with any

number of players or as solitaire. It is a particularly good game for young children, though adults may find it challenging and stimulating as well. The scheme is often used in quiz shows and can be employed as an educational game. It is an excellent means of exercising the brain.

In turn, each player chooses two cards and turns them face up. If they are of the same rank and color (e.g. six of hearts and six of diamonds, or queen of clubs and queen of spades, if used) then that player wins the pair and plays again. If they are not of the same rank and color, they are turned face down again and play passes to the player on the left. Rules can be changed here too: it can be agreed before the game starts that matching pairs be any two cards of the same rank, a color-match being unnecessary, or that the match must be both rank and card suit.

The game ends when the last pair has been picked up. The winner is the person with the most pairs. There may be a tie for first place.

There are many ways this Concentration utility can be used to exercise memory capability. The basic features of the software are described below.

Over the course of the game, it becomes known where certain cards are located, and so upon turning up one card, players with good memory will be able to remember where they have already seen its pair.

Once a card is revealed, should you wish to remove it from display, select the Remove button. Any revealed cards will be removed from the screen until the next time the Shuffle button is selected.

If you wish to hide a revealed card, select that card and the card will once again hide behind the associated number image. If the Hide checkbox is un-checked on the Utility Switchboard prior to the Concentration game being entered into, the Hide button will be displayed on the Concentration screen. Selecting that button will hide all exposed cards behind their associated number images.

Should you wish to display all underlying cards, such as when you would like to commit their locations to memory prior to a game, select the Reveal button. All cards that were previously not

removed from play will be exposed. Select the Cover button to once again hide those cards behind their associated number images.

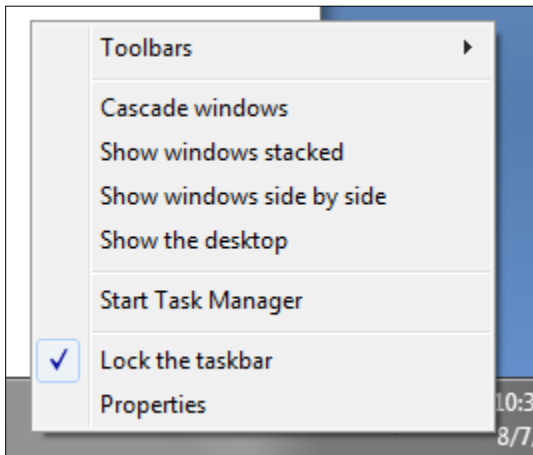
Selecting the Shuffle button will shuffle the deck and restore all 52 cards to the screen in hidden locations. Unlike the Chase the Ace game, there is no warning prompt for the Shuffle feature in the Concentration game.

From the Concentration game, you can either Exit the software (Exit button) or return to the main Chase the Ace software (Chase the Ace button).

MISCELLANEOUS

Software setup instructions

As the software is designed for maximum viewability at 1366 X 768 px screen resolution, it is recommended that the computer be set to Auto-hide the taskbar so that the full software screen is visible at all times. As such, unless the cursor is below the screen bottom (when Taskbar location on screen is set to Bottom), the taskbar will self-hide.



To access the screen displayed at the right, right-click a blank space on the taskbar and select Properties from the list (left) (Windows 7). In Windows 10, display a similar list and select Taskbar settings.

The Chase the Ace software was designed to operate in a Microsoft Access 2007 environment (a Runtime [enough of the Access 2007 program to run our software] for which is installed as the second stage of our software installation process).

Controls Visible



We recommend that users of the software utilize any buttons provided within the software to close or exit a screen. As with any software, certain code is activated with these buttons that may not be activated when a screen's application close (X) option is used. This

may result in unforeseen software problems. In addition, an accidental click on that X during a game will close the program at an inopportune time.

To assist in prevention of any of these situations, the screen's application close (X) controls can be hidden by removing the check mark in the Controls Visible checkbox.

Download / Installation

CHASE THE ACE - SOFTWARE DOWNLOAD / INSTALLATION

The Chase the Ace program is made available for download to enable new customers to have ready access to the program shortly after purchase. In addition, current users will always have access to the latest version of the software should the need / opportunity arise.

NOTE: There is no value in downloading this program if you have not purchased the software as an installation code and registered organization specific license information is required to open the program. (Demonstration copy available by request.)

You can initiate the software download by selecting the link below. (Please read the download / installation instructions below.)

<http://www.bingorose.biz/downloads/chase.zip>

DOWNLOAD / INSTALLATION INSTRUCTIONS

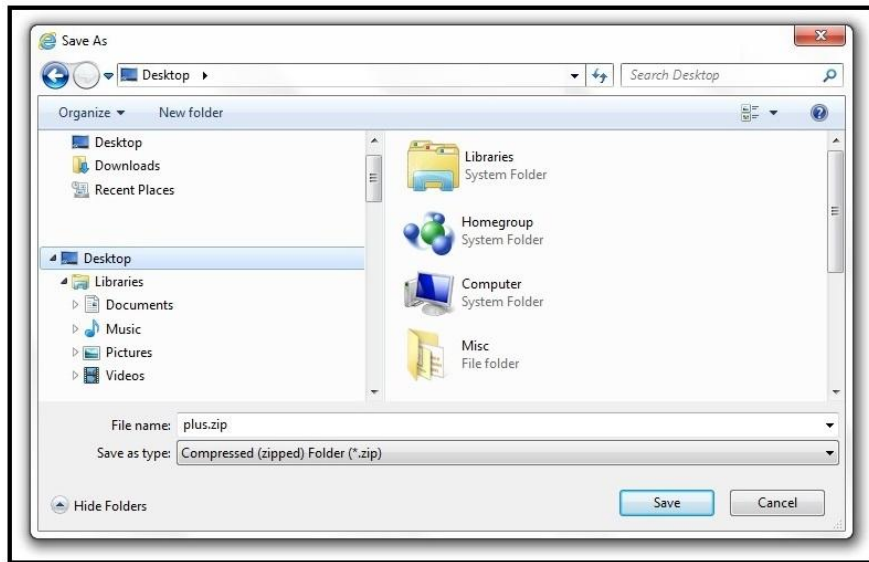
The following screens represent what you might see while initiating the download of our Chase the Ace program depending upon several factors such as Windows version or Browser.

(NOTE: Change references in the images from plus.zip to chase.zip, and from Bingo Hall Plus to Chase the Ace.)

After clicking on the chase.zip link above, the initial screen should look like the image at the right. (Download might be initiated automatically.)

Select Save As.

After selecting Save As, the next screen should look like the image below.



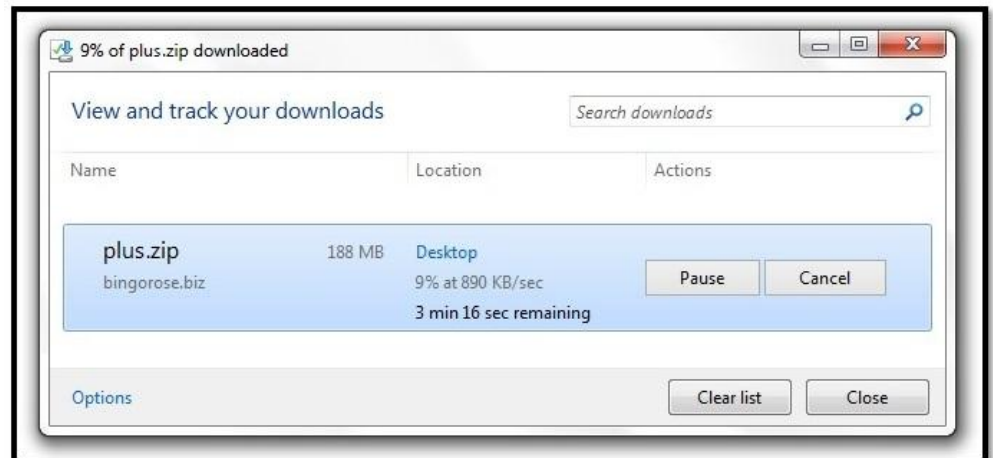
You can track the progress of your download.

Download speed will vary for each customer. You will be notified when the chase.zip file is completely downloaded. Once downloaded, find

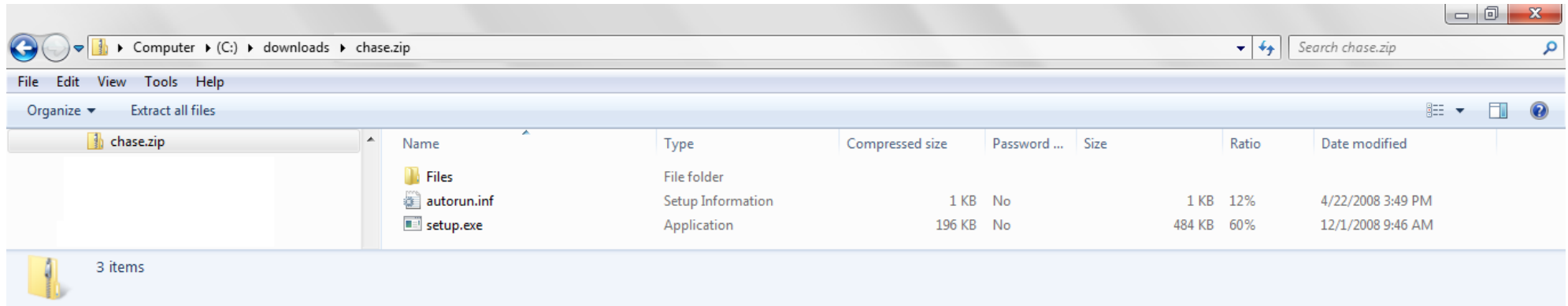


We recommend you save the plus.zip file to your desktop so that it is easy to find.

Select a location to download the chase.zip file to your computer (Desktop is a good location), and select Save. The next screen should look like the image below.



the chase.zip file and open it. (Note: If you don't see the .zip file extension, you can activate this computer setting by following the instructions contained in the 'A word about File Extensions' section below.) The contents of the chase.zip file should be displayed like the image below:



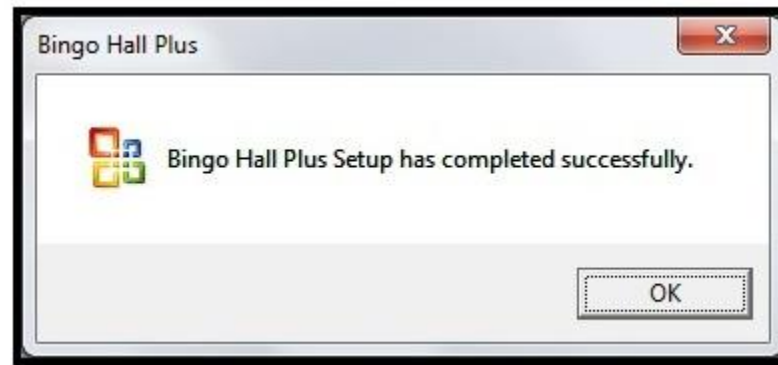
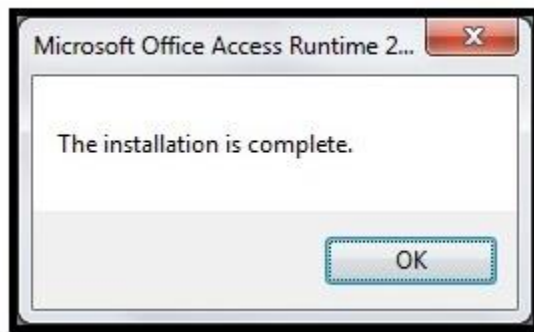
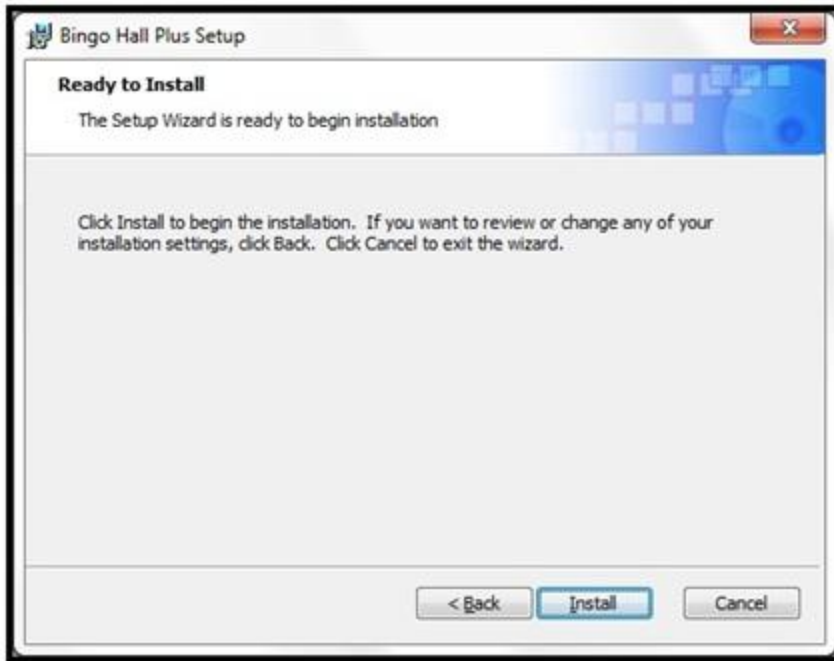
The chase.zip file contains the setup.exe file.

The following screens represent what you might see while installing the Chase the Ace program.

The chase.zip file contains everything you need to install the Chase the Ace software (what you would see if you had a software CD for this program). Installation is initiated by double-clicking the setup.exe file. Note that this is a two part installation, be patient. The first part installs our software, and the second part installs a Microsoft Access 2007 Runtime, enough of the Access 2007 program to run our software.

(Reminder: The images below refer to our Bingo Hall Plus software. All references to Bingo Hall Plus must be changed to Chase the Ace.)





A Chase the Ace icon will be installed on your desktop.

The first time you run the Chase the Ace program after installation, you will be asked to enter the Installation Code provided to you when you purchased the software. You will then be prompted to

enter the Organization Name and License detail, specific to your organization, which was also provided. This information must be entered exactly as advised to gain access to the software.

(Note that if you have previously downloaded a Chase the Ace demo that is still installed on your computer, there is no need to re-download / re-install the program as registration of that installation is a simple process.)

NOTE: Bingo Rose takes great efforts to fully document every feature of the software in a clear, concise, and complete manner. Help files are updated when we establish that there might be confusing information or we have discovered an interesting new way to use a particular feature. Any updates to the program documentation will be posted on our website at:

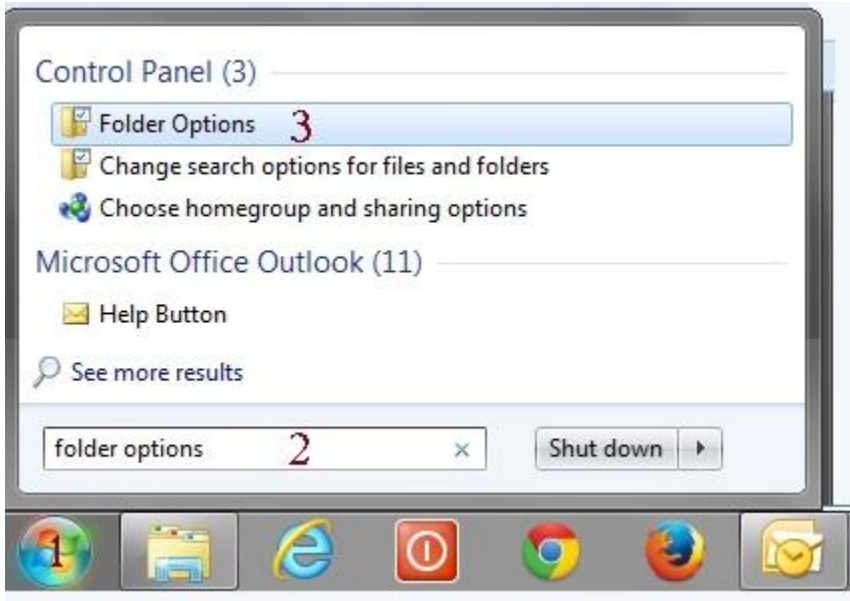
<http://www.bingorose.biz>

CHASE THE ACE – Your impressions matter

Bingo Rose continually strives to meet the needs of current and prospective customers. We would like to hear your opinions about this product. Please send us your opinions via email to info@BingoRose.biz.

Chase the Ace Help - A word about File Extensions

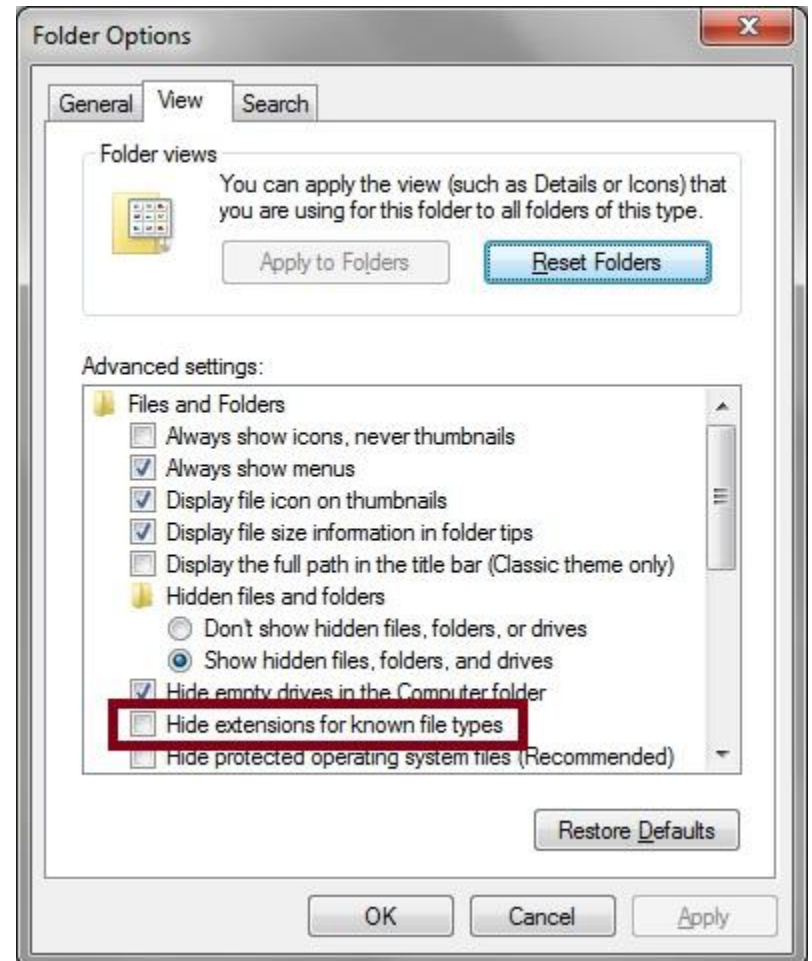
We refer to files throughout our documentation with their complete file name, including their extensions (i.e. setup.exe). Many customers are confused as their computer setting hides extensions. These steps outline how to unhide file extensions for known file types.



You can access Folder Options (Windows 7) by:

1. Selecting the Start button,
2. Typing 'folder options' in the search box, then
3. Selecting Folder Options that should appear somewhere in the list that displays.

When you access the Folder Options, View tab, Files and Folders section, ensure that the check mark is removed from the “Hide extensions for known file types” setting.



The About Bingo Rose screen

The About Bingo Rose screen - Useful information for tech support

The About Bingo Rose screen displays the same information provided in the splash screen when the Chase the Ace program is launched.



It contains some basic information about your computer and the environment that the program is operating within. This information might assist Bingo Rose personnel in troubleshooting any unlikely difficulties you experience with the program.

This form can also be opened from the Utility Switchboard. To close it when opened in this fashion, simply click on the form (anywhere but on the link to the Bingo Rose website).

Should you need to look up the Bingo Rose website address, there is a link to <http://www.BingoRose.biz> provided on this form.

The Bingo Rose License screen

The Bingo Rose License screen - Registration / Software License information

The Chase the Ace software is licensed for the enjoyment and sole use of a single organization. An Organization name must be provided at time of purchase. A License number will be provided in an email sent following purchase that is unique to that organization. Both the provided Organization name and the License number listed in that email must be entered exactly as indicated to gain access to the software when it is first run. Incorrect entries may result in the software terminating, necessitating re-launch to access this License form.

The Organization name that is provided at time of purchase is an important element of the software licensing process. This name will be displayed at the top of the software main screen.

Each time the software is launched, a Licensed User notification will appear.



To review your license information, this form can be opened from the Utility Switchboard.

Miscellaneous Policy

Bingo Rose - We want our customers to be happy.

Return Policy

Due to the nature of our products, no returns are accepted except for defective items. Items found to be defective when returned to Bingo Rose will be replaced at no cost. The customer is responsible for shipping costs associated with the return of the defective item.

If the item is found to be not defective, the customer is responsible for the cost of returning the item back to them.

An Authorization Number must be provided by Bingo Rose prior to such return. Please use either the Contact Form or an email message to sales@bingorose.biz to initiate any return efforts.

We make every effort to fully describe our products online. If in doubt, please contact Bingo Rose prior to purchase to make sure your questions are answered. Take advantage of the FREE DEMO of our Chase the Ace program, including our offer to walk you through the software's features via a phone session, to make sure the program meets your needs and performs correctly on your equipment before you buy!

Privacy

Your privacy is important to us. This privacy policy sets out how Bingo Rose uses and protects any information that you give Bingo Rose when you use our website.

Bingo Rose is committed to ensuring that your privacy is protected. Should we ask you to provide certain information by which you can be identified when using our website, then you can be assured that it will only be used in accordance with this privacy statement.

Bingo Rose may change this policy from time to time by updating this policy on our website. You should check that policy page from time to time to ensure that you are happy with any changes. This policy is effective from June 26, 2010.

What we collect

We may collect the following information:

- Name(s)
- Organization name
- Contact information including address, phone numbers, email address
- Other information relevant to customer surveys and/or offers
- History record of our communications

What we do with the information we gather

We require this information to understand your needs and provide you with a better service, and in particular for the following reasons:

- Internal record keeping.
- We may use the information to improve our products and services.
- We may periodically send promotional emails about new products, special offers or other information which we think you may find interesting using the email address which you have provided.

- From time to time, we may also use your information to contact you for market research purposes. We may contact you by email, phone or mail. We may use the information to customize the website according to your interests.

We respect your privacy. Should you no longer wish to receive infrequent product information / update email from Bingo Rose, simply send us an email and we will annotate our files accordingly. Likewise, if you do wish to continue to allow us to support you to our best ability, be sure to keep us informed of any new contact information as it becomes available.

General Terms and Conditions

We welcome you to visit our website. If you continue to browse and use our website you are agreeing to comply with and be bound by the following terms and conditions of use, which together with our privacy policy govern Bingo Rose's relationship with you in relation to the website.

The term 'Bingo Rose' or 'us' or 'we' refers to the owner of the website whose registered office is in Manitoba, Canada. Our company registration number is 99181183. The term 'you' refers to the user or viewer of our website / software.

The use of our website is subject to the following terms of use:

- The content of the pages of our website is for your general information and use only. It provides information about our products and services, and is used to market and sell to customers, and to provide after-sales support. It is subject to change without notice.
- Neither we nor any third parties provide any warranty or guarantee as to the accuracy, timeliness, performance, completeness or suitability of the information and materials found or offered on our website for any particular purpose. You acknowledge that such information and

materials may contain inaccuracies or errors and we expressly exclude liability for any such inaccuracies or errors to the fullest extent permitted by law.

- Your use of any information or materials on our website is entirely at your own risk, for which we shall not be liable. It shall be your own responsibility to ensure that any products, services or information available through our website meet your specific requirements.
- Our website contains material which is owned by or licensed to us. This material includes, but is not limited to, the design, layout, look, appearance and graphics. Reproduction is prohibited other than in accordance with the copyright notice, which forms part of these terms and conditions.
- All trademarks reproduced on our website which are not the property of, or licensed to, the operator are acknowledged on the website.
- Unauthorized use of our website may give rise to a claim for damages and/or be a criminal offence.
- From time to time our website may also include links to other websites. These links are provided for your convenience to provide further information. They do not signify that we endorse the website(s). We have no responsibility for the content of the linked website(s).
- You may not create a link to our website from another website or document without prior written consent from Bingo Rose.
- Your use of our website and any dispute arising out of such use of the website is subject to the laws of the Province of Manitoba, Canada.

Our Product Line

All Bingo Rose software programs have been developed and compiled using Microsoft Office Access 2007 which provides a rich platform for developing database management solutions. The Microsoft Office Access 2007 Runtime enables us to distribute Access 2007 applications to users who do not have the full version of Access 2007 installed on their computers. This runtime will be installed as part of each Bingo Rose program setup.

NOTE: A Windows Operating System is required. All Bingo Rose software requires a minimum of 1366 X 768 screen resolution both on the computer and any attached projection devices.

Please visit <http://www.BingoRose.biz> for complete product descriptions.

Available Software (Download Only)

[Bingo Hall Plus](#) - Comprehensive and flexible Bingo software solution (Try the [demo](#) before you buy !)

[Bingo Caller](#) - 75 or 90 ball Bingo Caller with RNG (random number generator)

[Bingo Flashboard \(Basic\)](#) - 75 ball Bingo Caller (requires ball delivery system)

[Bingo Home Edition](#) - 75 ball Bingo program designed for individual or group use (with RNG)

[DINGO \(Bingo for the Deaf\)](#) - Uniquely designed Bingo for the Deaf community

[Pokeno Plus](#) - Unique Bingo alternative and replacement for the standard POKENO game board

[Chase the Ace](#) - Unique Chase the Ace software.

Visit our website for details of new, upgraded, or free software.

Licensing

The Chase the Ace, Bingo Hall Plus, Bingo Caller, Bingo Flashboard (Basic), Bingo Home Edition, and DINGO (Bingo for the Deaf), programs are licensed for single organization use. The Organization Name must be provided at time of purchase. The same Organization Name must be used in conjunction with a License number (provided with the installation instructions) when the program is first used to register the licensee and record the Organization Name for display on the main screen.

The Pokeno Plus software is licensed for individual use. The licensee's name must be registered into the program when it is first used.

Enjoy secure checkout with PayPal

PayPal is an online payment solution. It enables any individual or business with an e-mail address to securely, easily and quickly send and receive payments online. PayPal's service builds on the existing financial infrastructure of bank accounts and credit cards and utilizes the world's most advanced proprietary fraud prevention systems to create a safe, global, real-time payment solution.

[Tell a friend about Bingo Rose software !](#)
