



Bingo Home Edition

Version 3.1

BINGO ROSE software licensed to - Organization Name

BINGO HOME EDITION

B	I	N	G	O
4	20	43	50	64
5	29	31	59	66
13	22	4952	52	73
7	21	41	51	67
6	19	34	49	65

B	I	N	G	O
14	26	39	59	74
9	24	32	58	68
12	29	3955	55	66
10	22	44	53	73
8	18	38	51	69

B	I	N	G	O
12	25	45	50	62
10	19	39	57	63
6	16	8870	47	75
4	24	44	53	70
2	26	35	48	64

B	I	N	G	O
11	22	35	49	61
8	17	45	54	67
6	21	6170	55	65
9	27	34	56	75
14	16	39	46	73

Print Cards
New Cards

B	I	N	G	O

Full Diamond

Pattern

B	1	2	3	4	5	6	7	8	9	10	11	12	13	14	15
I	16	17	18	19	20	21	22	23	24	25	26	27	28	29	30
N	31	32	33	34	35	36	37	38	39	40	41	42	43	44	45
G	46	47	48	49	50	51	52	53	54	55	56	57	58	59	60
O	61	62	63	64	65	66	67	68	69	70	71	72	73	74	75

B 13

26 Balls selected

Countdown

© 2018 All Rights Reserved

☐ Wild Ball ☐ Wild Row

Exit New Game Select Stop

More than just BINGO !

Introducing a creative new way to enjoy a solitary game of BINGO.

Bingo Rose has responded to customer calls to reintroduce one of our first programs that was designed to allow Bingo lovers to enjoy playing the game as a fun pastime much like playing solitaire. In addition, the vastly improved screen layouts and ability to use the software in a screen mode suitable for group play meets the needs of customers in search of a simple, yet effective, method of bringing their BINGO to the big screen !



Version 3.1 released December 8, 2018

Discover the new Bingo Home Edition software.

Bingo Rose is proud of its commitment to design excellence and customer service.

Our customers value the attention to detail incorporated into each program's design. Support questions are responded to quickly and effectively. The feedback from you, the front line of the software usage, is seriously considered and instrumental to future program development. Our software is created to do what you would program it to do if you had the necessary time and programming skills. We have very happy customers on six continents!



We strive to document our software as clearly as possible. However, if you don't understand something about our software, or would like to find out how it can be set up to best meet your particular environment's needs, we would love to hear from you.

Seasonal contact details are available on the <http://www.BingoRose.biz> website.



The Bingo Home Edition software, our newest product, offers these valuable features:

- Optimized for 1366 X 768 screen resolution.
- Uncluttered and visually appealing screen layout.
- Two unique screen displays (Private and Group).
- Easy access to user setup (Utility Switchboard).
- User customizable voice files call numbers.
- Show or hide miscellaneous screen elements.
- Automatic number selection in Auto or Timer mode.
- Wild Row and Wild Ball capability.
- Ability to add / delete simple patterns to / from the large selection of installed patterns.
- 4 On Bingo card printing capability from 9000 unique installed cards.
- Likely compatibility with Series 1 – 9000 card paper available from retailers.
- Ability to modify appearance of number called display on Group screen display.
- Four (4) on-screen cards to 'play' on Private screen display.

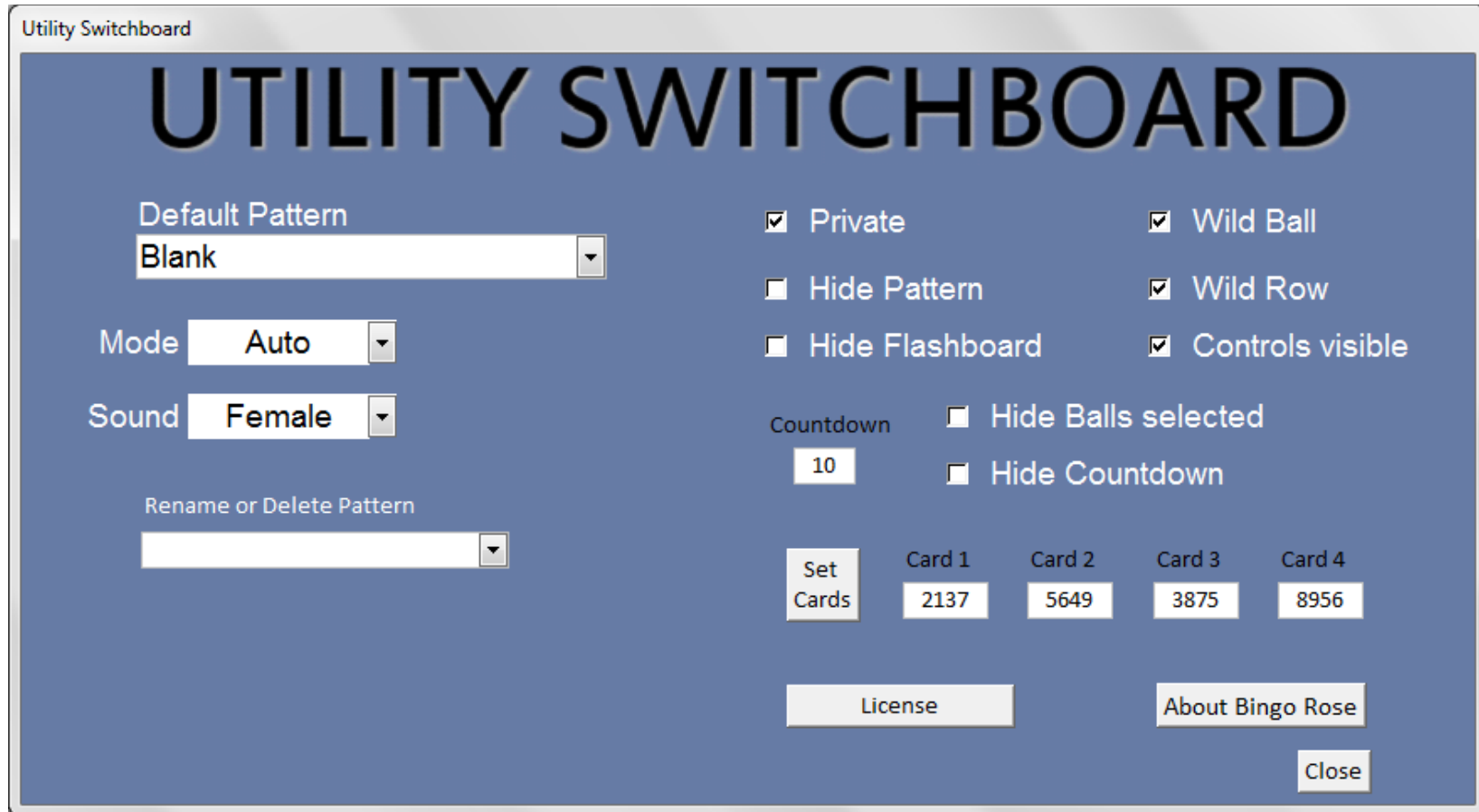


Most organizations already have the essential hardware to operate a successful Bingo Home Edition event. Simply connect your laptop with a Windows Operating System to a large screen TV (or projector capable of a minimum 1366 X 768 screen resolution) for a Bingo Home Edition experience like no other.

Should at any time you wish to upgrade to a more feature-rich Bingo software experience such as our comprehensive Bingo Hall Plus software, we will process a refund for the full amount paid for the Bingo Home Edition software.

UTILITY SWITCHBOARD

The Utility Switchboard – Setup to meet your needs



The screenshot shows a window titled "Utility Switchboard" with a blue background. The title bar also says "Utility Switchboard". The main heading "UTILITY SWITCHBOARD" is in large, bold, black letters. Below the heading, there are several settings:

- Default Pattern:** A dropdown menu showing "Blank".
- Mode:** A dropdown menu showing "Auto".
- Sound:** A dropdown menu showing "Female".
- Rename or Delete Pattern:** A text input field with a dropdown arrow.
- Checkboxes:**
 - ☒ Private
 - ☐ Hide Pattern
 - ☐ Hide Flashboard
 - ☒ Wild Ball
 - ☒ Wild Row
 - ☒ Controls visible
 - ☐ Hide Balls selected
 - ☐ Hide Countdown
- Countdown:** A text input field showing "10".
- Buttons:**
 - "Set Cards"
 - "Card 1" showing "2137"
 - "Card 2" showing "5649"
 - "Card 3" showing "3875"
 - "Card 4" showing "8956"
 - "License"
 - "About Bingo Rose"
 - "Close"

The Utility Switchboard is accessed by double-clicking the Bingo Rose logo at the bottom right side of the main screen.



Default Pattern dropdown

The Default Pattern dropdown establishes which pattern to display on the main screen when the software is launched. This is useful when the user does not want the pattern display hidden from the main screen but regularly uses the same pattern.

Mode dropdown

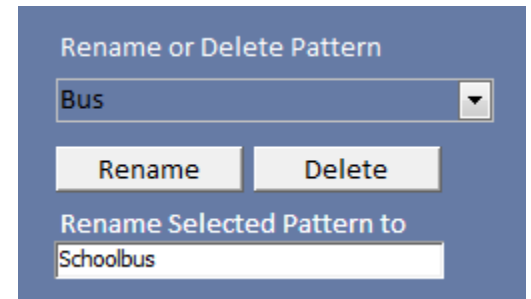
The Mode dropdown manages whether or not the user wishes that the programmed calling of the cards is Auto(matic) or at a more controlled Timer rate. Both modes progress at the speed (seconds between calls) set in the Countdown control. The Timer mode is identical to the Auto mode except that the caller must select the Select button (when it reappears after the countdown seconds reaches 0) to activate the next ball called. Note that use of the mouse would not be required as the Select button, when it reappears on screen, will be the default control and therefore use of the Enter key on your keyboard will activate that control.

Sound dropdown

The Sound dropdown manages whether or not the user wishes that the programmed calling of the cards or silent operation (full voice control over the Bingo Home Edition event) be used. All sound files associated with the program are located in the C:\Bingo Home\Voices folder. These wav files can be modified by the user if required, as long as the file names and format are maintained.

Rename or Delete Pattern

The Rename or Delete Pattern dropdown activates the ability to either rename or remove an installed or added pattern from the program. (See how to add your own basic patterns to the program in the 'Adding new patterns' section of this documentation.)



Rename or Delete Pattern

Bus

Rename Delete

Rename Selected Pattern to

Schoolbus

Private checkbox

From the Utility Switchboard, you can select between the two separate screen displays contained in the software. With a checkmark in the Private checkbox, the software is set up for use by a single player who would play the game much like playing solitaire. With no checkmark in the Private checkbox, the software is set up for use by a group who could enjoy a big screen Bingo hall experience.

Hide Pattern

Place a checkmark in the Hide Pattern checkbox to hide the Pattern display on the software's main screen.

Hide Flashboard

Place a checkmark in the Hide Flashboard checkbox to hide the Flashboard display on the software's main screen.

Wild Ball

With a checkmark in the Wild Ball checkbox, the Wild Ball checkbox is visible on the software's main screen. This makes the Wild Ball feature available with a simple click on that checkbox.

Wild Row

With a checkmark in the Wild Row checkbox, the Wild Row checkbox is visible on the software's main screen. This makes the Wild Row feature available with a simple click on that checkbox.

Controls Visible

We recommend that users of the software utilize any buttons provided within the software to close or exit a screen. As with any software, certain code is activated with these buttons that may not be activated when a screen's application close (X) option is used. This may result in unforeseen software

problems. In addition, an accidental click on that X during a game will close the program at an inopportune time.



To assist in prevention of any of these situations, the screen's application close (X) controls can be hidden by removing the check mark in the Controls Visible checkbox.

Hide Balls selected

With a checkmark in the Hide Balls selected checkbox, the Hide Balls selected is hidden on the software's main screen.

Hide Countdown

With a checkmark in the Hide Countdown checkbox, the Countdown timer control is hidden on the software's main screen.

Set Cards

The software includes 9000 unique Bingo cards which can be displayed on the main screen for play in Private mode. These cards can also be printed 4 per sheet. You can identify which Card numbers you wish to display / print by entering those card numbers in the Card 1 – 4 text boxes and selecting the Set Cards button to display those cards on screen.

License

Selecting the License button will display the screen that was used to register the software when it was first launched after installation that shows the licensed Organization and License number provided by Bingo Rose. (See Bingo Rose License image on the next page.)

The About Bingo Rose splash screen displays when the software is launched. It is also accessible by selecting the About Bingo Rose button on the Utility Switchboard.



This screen displays information about the environment that the software is operating in on your computer. As such, in the unlikely event you experience difficulty with the software, the information on this screen may be valuable to Bingo Rose in efforts to diagnose the problem you are experiencing.

The Bingo Home Edition software is licensed for use by a single Organization. The information provided at time of purchase is used to create the unique license detail to enter into the screen at the right to register the Organization as the sole authorized user. The first time the software is used, this registration screen will appear.

The Organization Name provided will appear in the top banner of the software.

The screenshot shows the 'BINGO ROSE LICENSE' registration screen. At the top, it says 'Organization'. Below that, there is a section titled 'Organization' with a text input field containing 'Your Organization Name'. A red instruction line follows: 'Enter the Organization name exactly as listed in the email message that was sent when your software was purchased.' Below this is a section titled 'License' with a text input field containing 'TNXo7715E77'. Another red instruction line follows: 'Enter the License number exactly as listed in the email message that was sent when your software was purchased.' Below that, a paragraph of red text reads: 'Enter the Organization and License information in the above boxes. The Organization name will be stored in the program.' At the bottom, there is a note in red: 'Note that Bingo Home Edition is licensed solely for the use of the individual / organization entered in the Organization box above. Any other user is unauthorized and is required to discontinue use of this program.' At the very bottom, there are two buttons: 'Test License' and 'Register'.

MAIN SCREEN

The Bingo Home Edition Main Screens – Flexibility built-in

BINGO ROSE software licensed to - Organization Name

BINGO HOME EDITION

B	I	N	G	O
4	20	43	50	64
5	29	31	59	66
13	22	4952	52	73
7	21	41	51	67
6	19	34	49	65

B	I	N	G	O
14	26	39	59	74
9	24	32	58	68
12	29	3955	55	66
10	22	44	53	73
8	18	38	51	69

B	I	N	G	O
12	25	45	50	62
10	19	39	57	63
6	16	8870	47	75
4	24	44	53	70
2	26	35	48	64

B	I	N	G	O
11	22	35	49	61
8	17	45	54	67
6	21	6170	55	65
9	27	34	56	75
14	16	39	46	73

Print Cards

New Cards

B	I	N	G	O

Full Diamond

▼ Pattern

B	1	2	3	4	5	6	7	8	9	10	11	12	13	14	15
I	16	17	18	19	20	21	22	23	24	25	26	27	28	29	30
N	31	32	33	34	35	36	37	38	39	40	41	42	43	44	45
G	46	47	48	49	50	51	52	53	54	55	56	57	58	59	60
O	61	62	63	64	65	66	67	68	69	70	71	72	73	74	75

B 13

25 Balls selected

Countdown

© 2018 All Rights Reserved

☐ Wild Ball

☐ Wild Row

Exit

New Game

Select

Stop

www.BINGO ROSE.biz

Quality Software Solutions

The primary design of the software is the Private mode screen that allows for play much like as one would play solitaire whereby the 4 cards at the top of the screen are 'played' as numbers are called.

The BINGO HOME EDITION banner that appears at the top of the main screen can be modified to make the software look a bit more proprietary. The 618 X 51 dimension C:\Bingo Home\Numbers \banner.jpg image file is loaded in this space when the software is launched. File dimensions, type, and name must remain the same. (You can also make that banner disappear by renaming the installed C:\Bingo Home\Numbers \banner blank.jpg to banner.jpg to replace the default banner with a blank appearing image. Re-launch the software for changes to take effect.

Four Bingo cards are displayed at the top of the screen for your 'playing' enjoyment as a solitary activity. As numbers are called by the program, simply click on the associated number on the cards to highlight (dab) that number as being called. These cards can only be marked while the game is being called (Stop not activated). If a number is selected in error, a double-click on that number will reverse the highlighting.

You can print the four cards displayed if desired as an alternative to clicking in the software screen by selecting the Print Cards button. Should you have previous cards printed and wish for one of them to be displayed on-screen, use the Set Cards feature on the Utility Switchboard. The last set of cards displayed when the software is shut down will display the next time the software is loaded.

If you select the New Cards button, four new randomly selected Bingo cards from the 9000 cards in the program will replace those currently on screen.

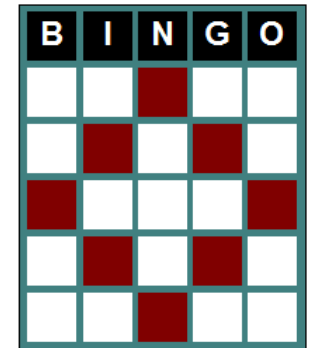
The last number called is displayed to the right of the flashboard and, if the software is not set to Silent mode, that number sound file will be activated to announce the number.

Other features on this main screen are identical to operation in the Group mode.

You can choose between Private or Group mode on the Utility Switchboard. You can also toggle between these two modes by double-clicking the BINGO HOME EDITION banner (Private to Group) or single-clicking the BINGO HOME EDITION banner (Group to Private).

BINGO HOME EDITION

B - **13**



Full Diamond

▼ Pattern

B	1	2	3	4	5	6	7	8	9	10	11	12	13	14	15
I	16	17	18	19	20	21	22	23	24	25	26	27	28	29	30
N	31	32	33	34	35	36	37	38	39	40	41	42	43	44	45
G	46	47	48	49	50	51	52	53	54	55	56	57	58	59	60
O	61	62	63	64	65	66	67	68	69	70	71	72	73	74	75

26 Balls selected

Countdown

© 2018 All Rights Reserved

☐ Wild Ball

☐ Wild Row

Exit

New Game

Select

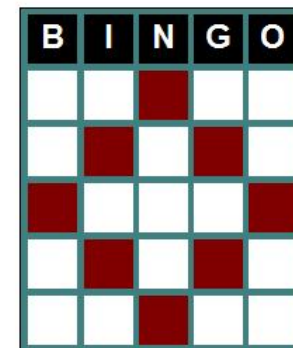
Stop



The secondary, yet equally unique and important, design of the software is the Group mode screen that allows for play with a group of players. The default letters / numbers image files used in the above screen have been installed with the software for your convenience in the C:\Bingo Home\Numbers Allstar folder. To return to use of those graphics, copy the contents of that folder to the C:\Bingo Home\Numbers folder (the active location from which the screen number graphics are drawn) to replace the files located there.

BINGO HOME EDITION

B-13



Full Diamond

B	1	2	3	4	5	6	7	8	9	10	11	12	13	14	15
I	16	17	18	19	20	21	22	23	24	25	26	27	28	29	30
N	31	32	33	34	35	36	37	38	39	40	41	42	43	44	45
G	46	47	48	49	50	51	52	53	54	55	56	57	58	59	60
O	61	62	63	64	65	66	67	68	69	70	71	72	73	74	75

26 Balls selected

Countdown

© 2018 All Rights Reserved

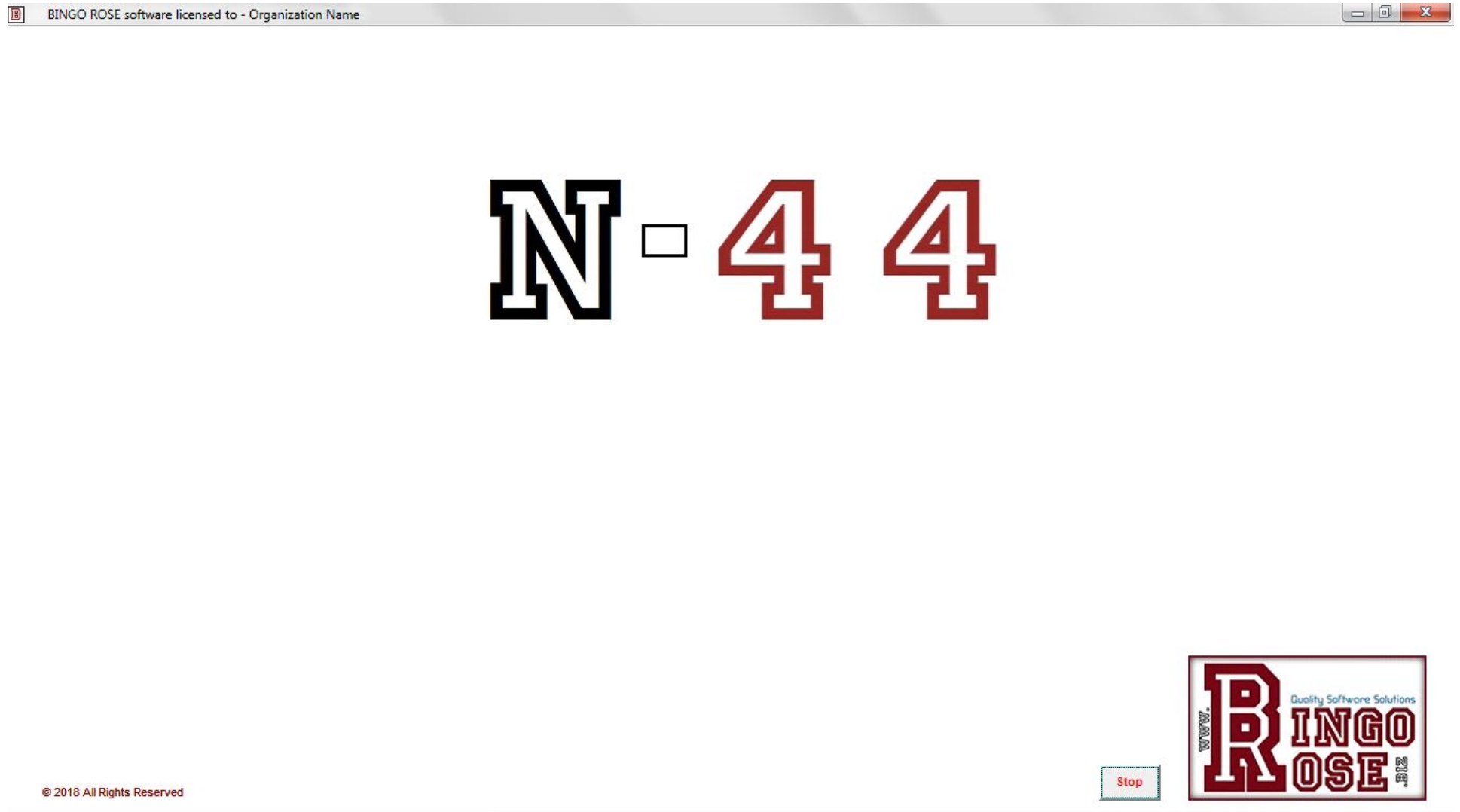
☐ Wild Ball

☐ Wild Row



The letters / numbers image files used in the above screen have been installed with the software for your convenience in the C:\Bingo Home\Numbers Orig folder. To use those graphics, copy the contents of that folder to the C:\Bingo Home\Numbers folder to replace the files located there. (You will need to re-launch the software for all graphics to change.)

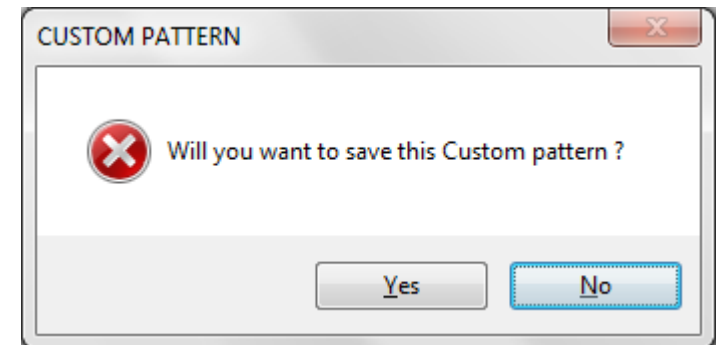
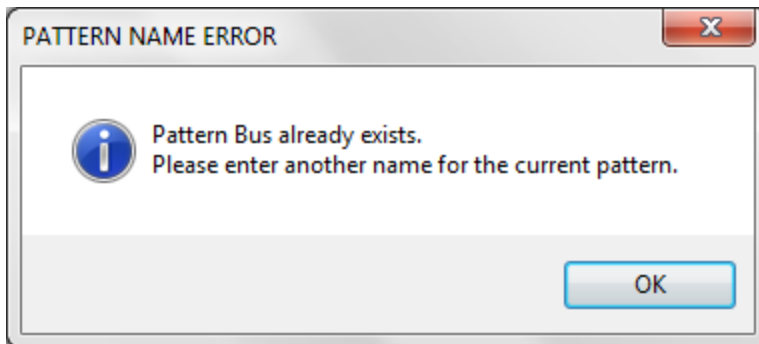
The Bingo Home Edition software main screen can be customized to meet your organization's particular needs via the ability to hide various elements that can appear on the screen. In its most basic layout, the main screen could look like the image below.



MISCELLANEOUS

Adding new patterns

A wide selection of game patterns are installed with the software. However, should you wish to add a basic design pattern of your own, simply select the Custom pattern from the Pattern dropdown. You will be asked to confirm that you wish to save the Custom pattern. Indicating Yes will allow you to identify the pattern design in the Bingo grid at the top right of the screen by single-clicking a grid square to highlight that square or double-clicking to remove highlighting from that square. Once designed, you would enter the name of that pattern in the New Pattern Name text box located to the left of the Bingo Rose logo and then select the Save Pattern button. You will receive a notification that the new pattern has been added.



You cannot add a new pattern with the same name as one that already exists in the software. Either delete the pattern that already exists if it is not to your liking before creating the new pattern or choose a different name for the new pattern you are attempting to create.

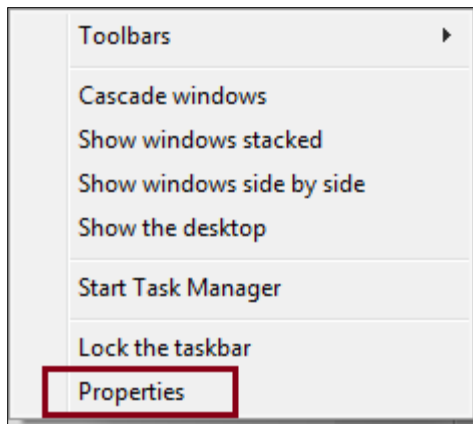
About the Bingo cards

The 9000 Bingo cards installed in this software (Card # 1 to 9000) are *believed* to work with some Bingo paper company Series 1 to 9000 paper such as the 1 on Pushout Bingo Paper Cards available from many retail stores. (These perms were provided to us by a customer sponsoring TV Bingo for whom we created a custom solution which allows them to identify when a winning card is possible.) Customers of our other Bingo software products report that they have accurately been used in their environment. As such, they are an excellent alternative to printing cards using our print utility.

SOFTWARE SETUP

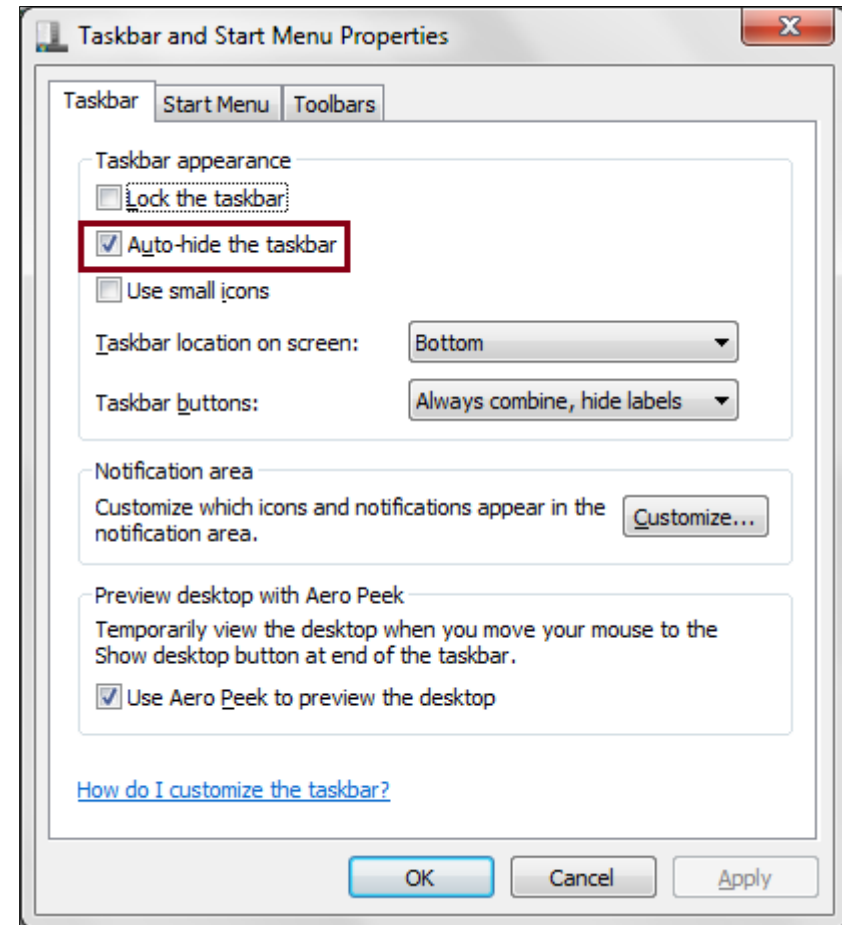
Software setup instructions

As the software is designed for maximum viewability at 1366 X 768 px screen resolution, it is recommended that the computer be set to Auto-hide the taskbar so that the full software screen is visible at all times. As such, unless the cursor is below the screen bottom (when Taskbar location on screen is set to Bottom), the taskbar will self-hide.



To access the screen displayed at the right, right-click a blank space on the taskbar and select Properties from the list (left) (Windows 7). In Windows 10, display a similar list and select Taskbar settings.

The Bingo Home Edition software was designed to operate in a Microsoft Access 2007 environment (a Runtime [enough of the Access 2007 program to run our software] for which is installed as the second stage of our software installation process).



Download / Installation

BINGO HOME EDITION - SOFTWARE DOWNLOAD / INSTALLATION

The Bingo Home Edition program is made available for download to enable new customers to have ready access to the program shortly after purchase. In addition, current users will always have access to the latest version of the software should the need / opportunity arise.

NOTE: There is no value in downloading this program if you have not purchased the software as an installation code and registered organization specific license information is required to open the program. (Demonstration copy available by request.)

You can initiate the software download by selecting the link below. (Please read the download / installation instructions below.)

<http://www.bingorose.biz/downloads/bingohome.zip>

DOWNLOAD / INSTALLATION INSTRUCTIONS

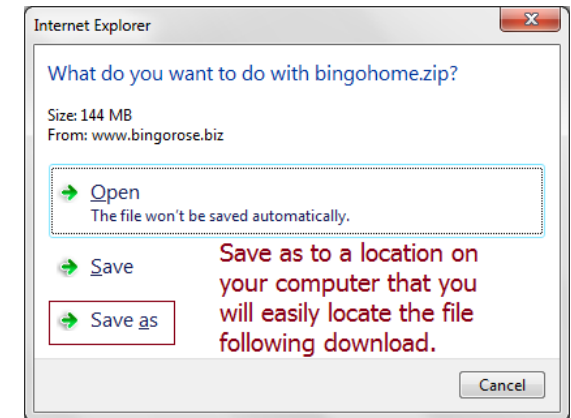
The following screens represent what you might see while initiating the download of our Bingo Home Edition program depending upon several factors such as Windows version or Browser.

After clicking on the [bingohome.zip](#) link above, the initial screen should look like the image at the right. (Internet Explorer)

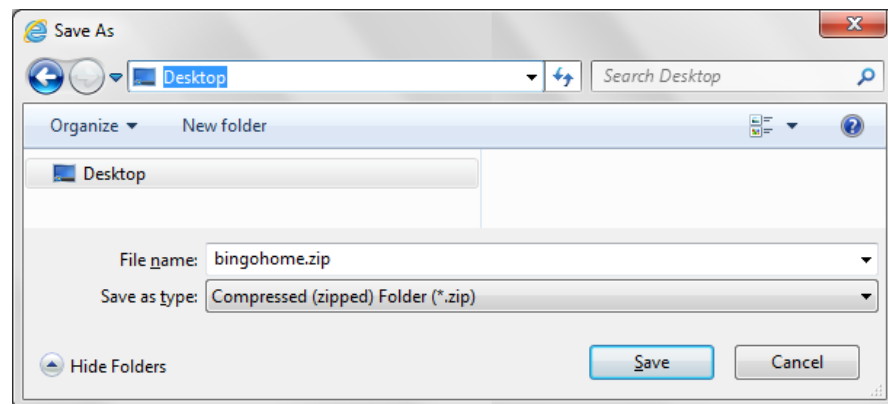
(Download might be initiated automatically.)

Select **Save As**.

After selecting **Save As**, the next screen should look like the image below.

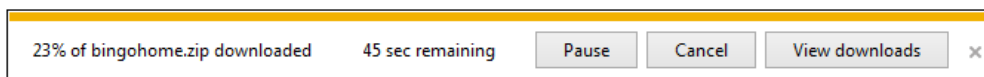


We recommend you save the [bingohome.zip](#) file to your desktop so that it is easy to find.



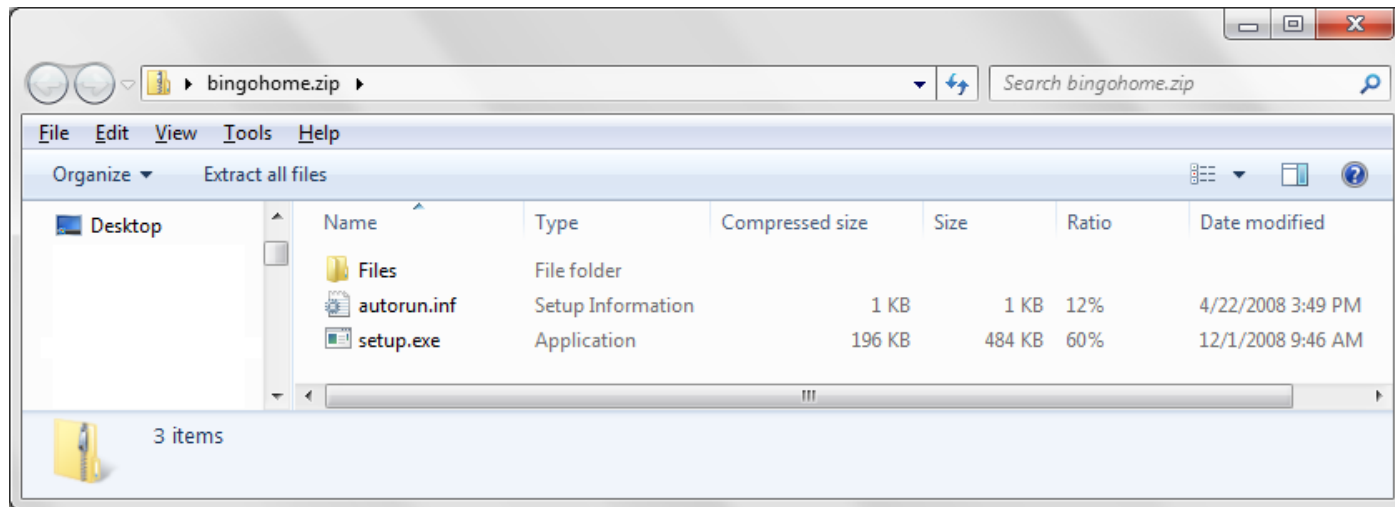
Select a location to download the [bingohome.zip](#) file to your computer (Desktop is a good location), and select **Save**. The next screen should look like the image below.

Download speed will vary for each customer. You will be notified when the [bingohome.zip](#) file is completely downloaded. Once downloaded, find the [bingohome.zip](#) file and open it.



You can track the progress of your download.

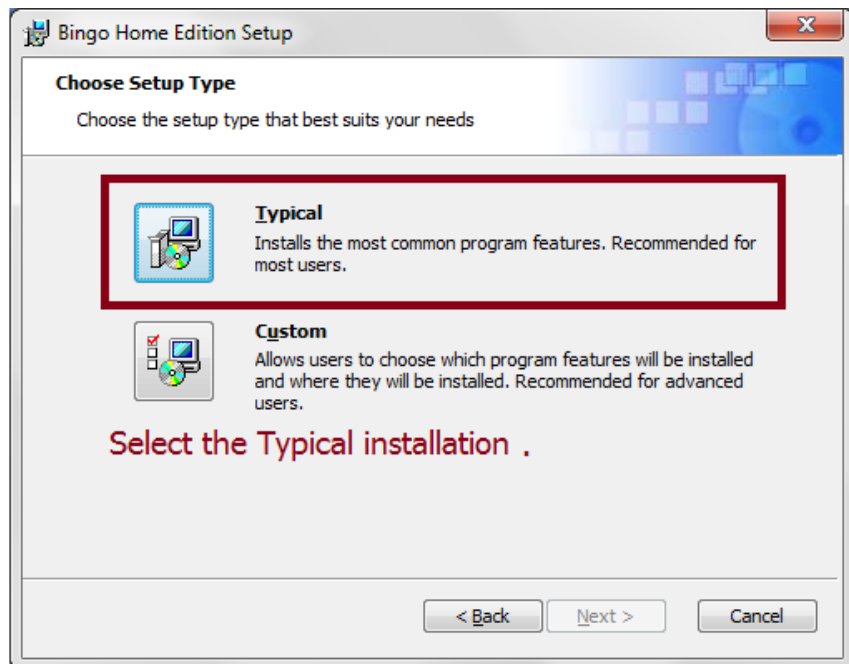
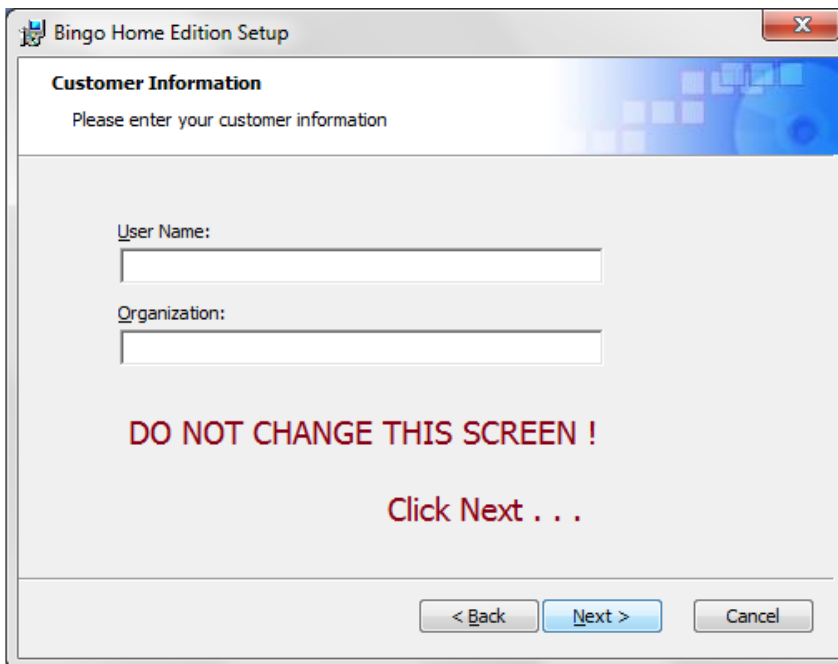
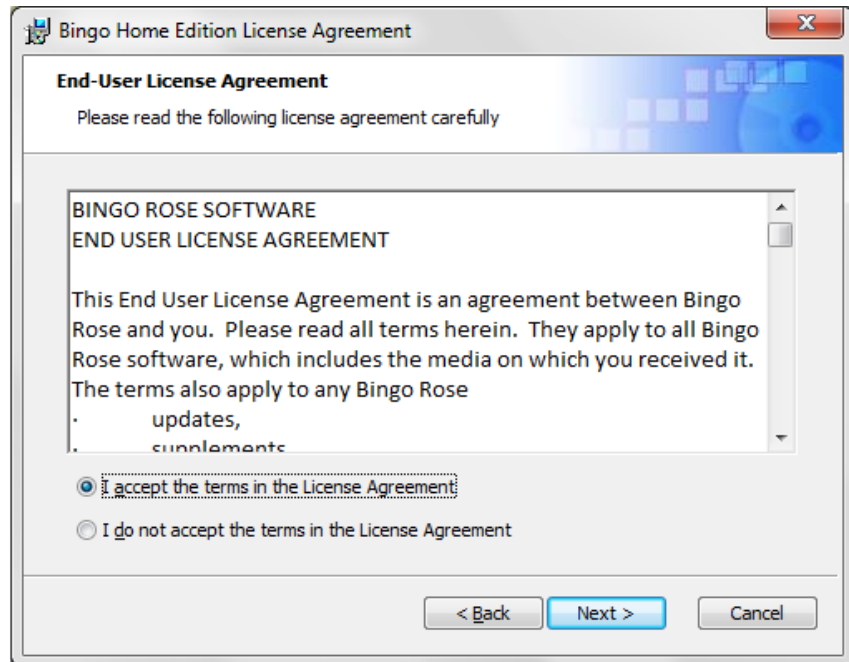
(Note: If you don't see the .zip file extension, you can activate this computer setting by following the instructions contained in the 'A word about File Extensions' section below.) The contents of the bingohome.zip file should be displayed like the image below:

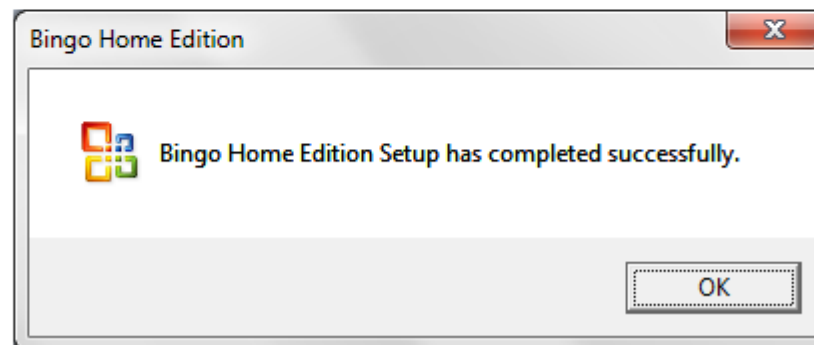
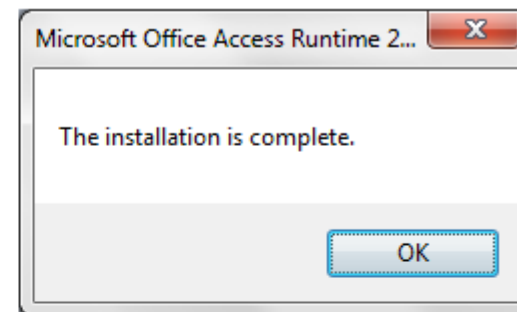
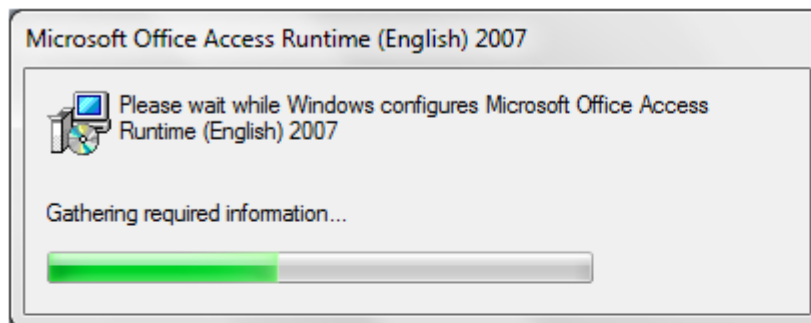
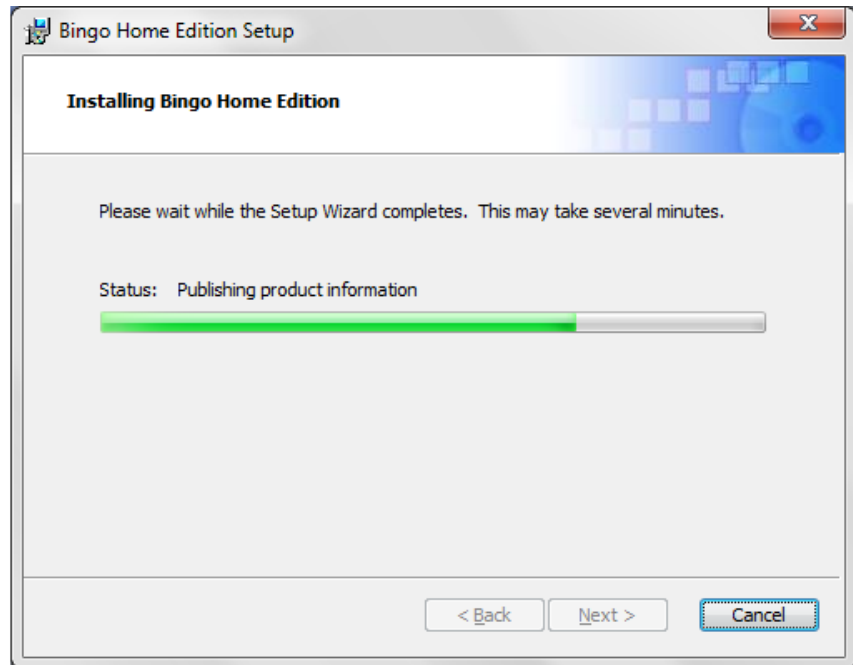
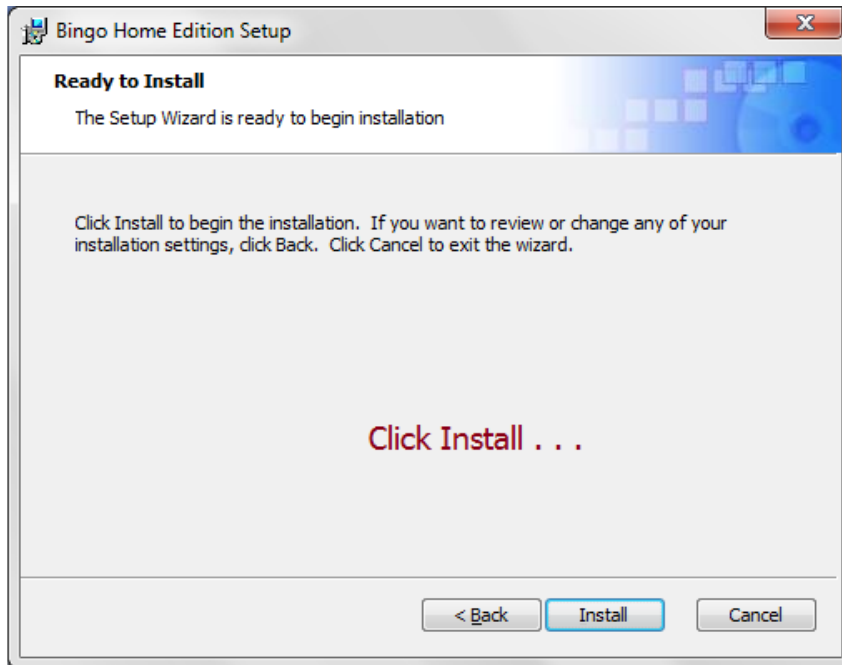


The bingohome.zip file contains the setup.exe file.

The following screens represent what you might see while installing the Bingo Home Edition program.

The bingohome.zip file contains everything you need to install the Bingo Home Edition software (what you would see if you had a software CD for this program). Installation is initiated by double-clicking the setup.exe file. Note that this is a two part installation, ... be patient. The first part installs our software, and the second part installs a Microsoft Access 2007 Runtime, enough of the Access 2007 program to run our software.





A Bingo Home Edition icon will be installed on your desktop.

To ensure the best presentation of the software's flashboard numbers, please be sure to install the Oswald font prior to use. (See Oswald Font Required info below.)

The first time you run the Bingo Home Edition program after installation, you will be asked to enter the Installation Code provided to you when you purchased the software. You will then be prompted to enter the Organization Name and License detail, specific to your organization, which was also provided at time of purchase. This information must be entered exactly as advised to gain access to the software.

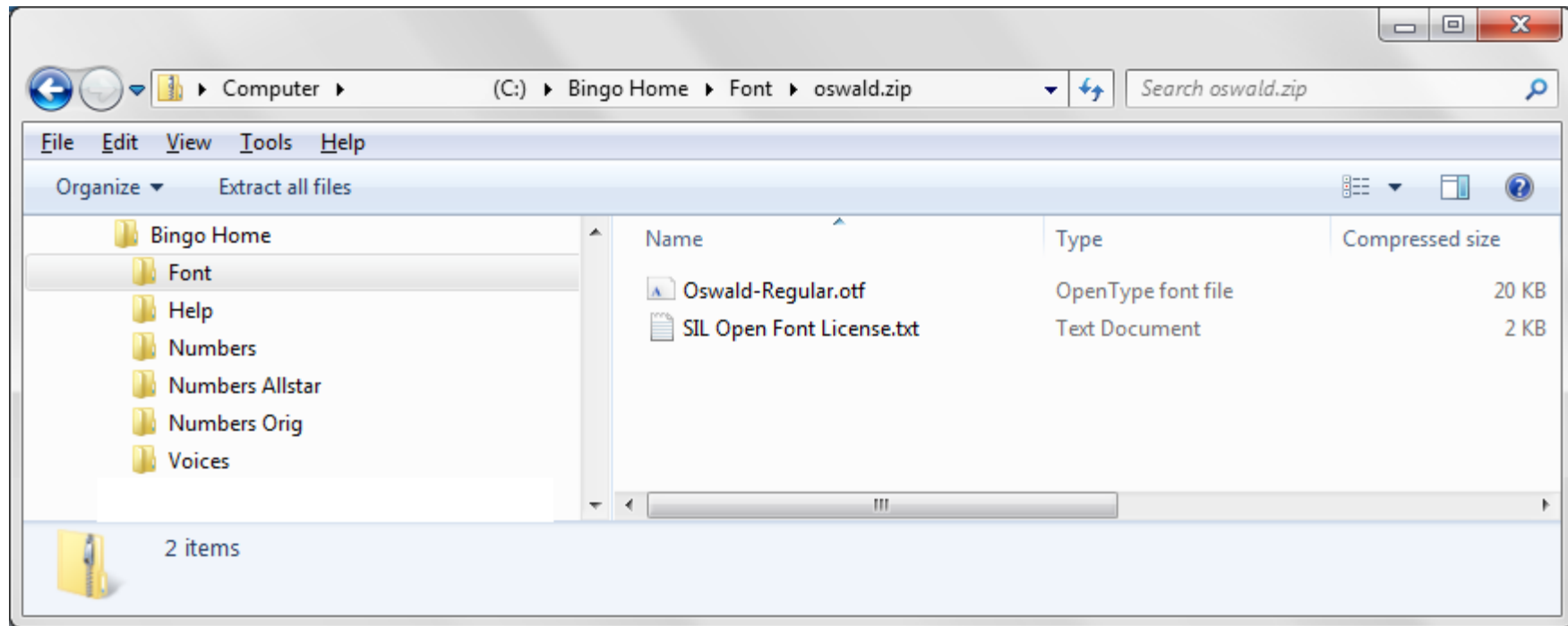
(Note that if you have previously downloaded a Bingo Home Edition demo that is still installed on your computer, there may be no need to re-download / re-install the program if you follow simple process instructions that Bingo Rose would provide in that situation.)

OSWALD FONT REQUIRED

NOTE: The Bingo Home Edition program uses the Oswald font to achieve crisp numbers on the Bingo flashboard. Following software installation, you must install this font to get an accurate appreciation for the software's clean and clear main screen. The Oswald-Regular font installation file is installed with the program and is located in the C:\Bingo Home\Font\oswald.zip file.

Simply double-click the Oswald-Regular.otf file contained in the Oswald.zip file and select Install.

The Oswald font is required to achieve crisp numbers on the Bingo flashboard.



Alternatively, extract the Oswald-Regular.otf file to the Font sub-folder, then right-click the font file, and then click Install. (If the software main screen does not look correct following installation of the font, you may need to re-start your computer to activate the Oswald font.)

NOTE: Bingo Rose takes great efforts to fully document every feature of the software in a clear, concise, and complete manner. Help files are updated when we establish that there might be confusing information or we have discovered an interesting new way to use a particular feature. Any updates to the program documentation will be posted on our website at:

<http://www.bingorose.biz>

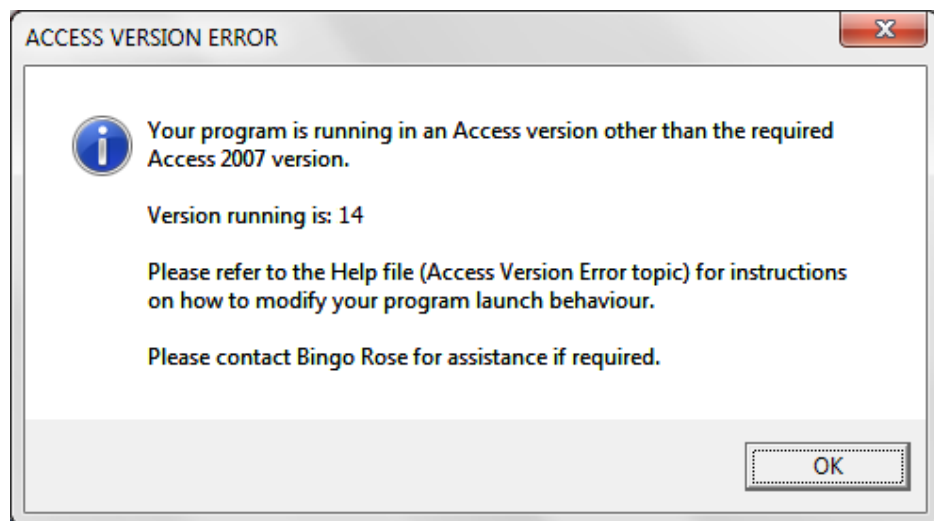
BINGO HOME EDITION – Your impressions matter

Bingo Rose continually strives to meet the needs of current and prospective customers. We would like to hear your opinions about this product. Please send us your opinions via email to info@BingoRose.biz.

Access Version Error

Bingo Home Edition - We want your software to perform the way it was designed to.

The Bingo Home Edition software was designed to operate in a Microsoft Access 2007 environment. That is why the second stage of our product installation is an installation of the Microsoft Access 2007 Runtime, enough of that program to allow our software to perform to 100% efficiency.



Some customers may currently have installed, or at a later date install, a different version of Microsoft Access. Should our software be opened by a version of Access that is not Version 2007, a message similar to the one at the left will display.

While most customers will not experience any difficulty, running into a problem during your Bingo event would likely spoil your day!

By default, the 2007 Office programs are located in the C:\Program Files (x86)\Microsoft Office\Office12 folder. As such, the Access 2007 program file that should open to allow guaranteed operation of the Bingo Home Edition software should be C:\Program Files (x86)\Microsoft Office\Office12\msaccess.exe.



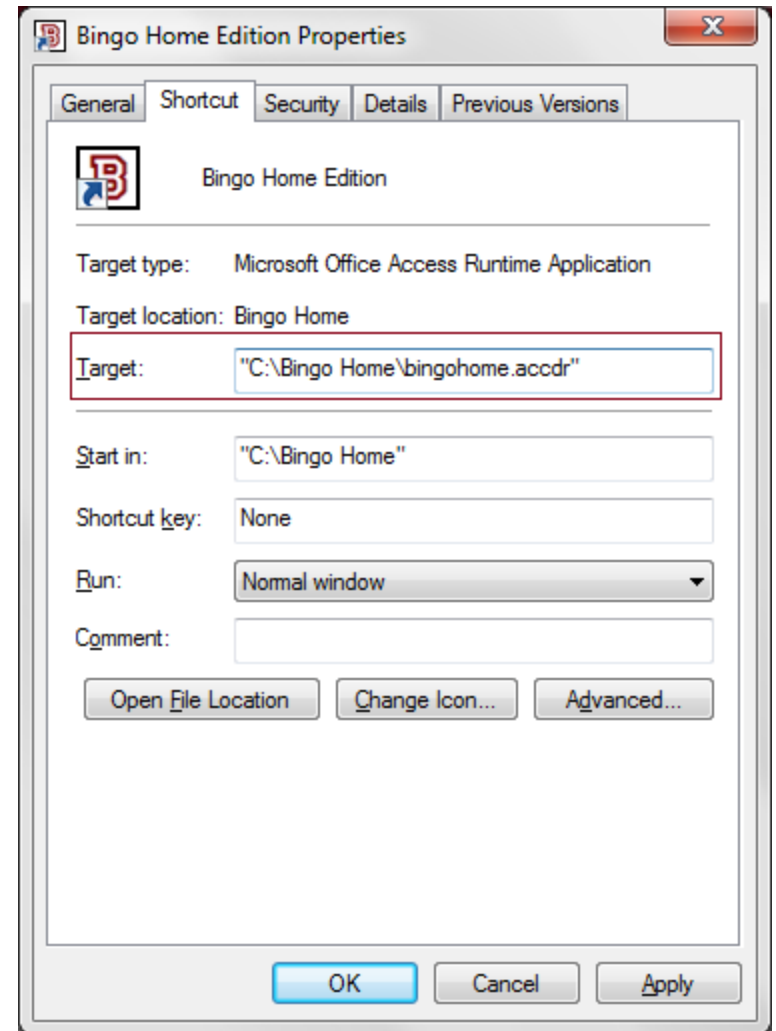
If the About Bingo Rose screen (similar to the image above) displays a leading 12 in the JET/ACE space, the software is operating in the correct environment.

Note that it is also advisable that your Microsoft Access program be updated with the most current updates available. As such, please run Windows Update: Click the Start button, click All Programs, and then click Windows Update.

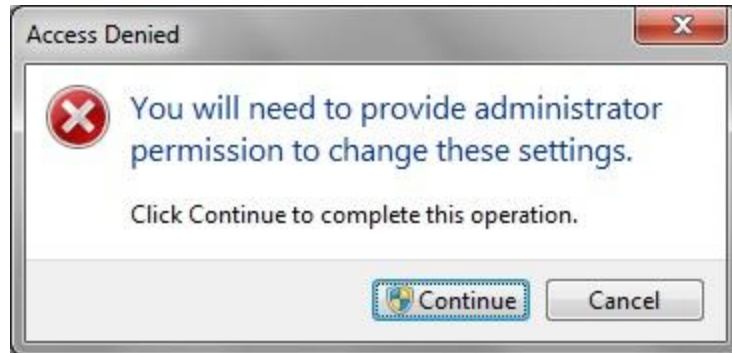
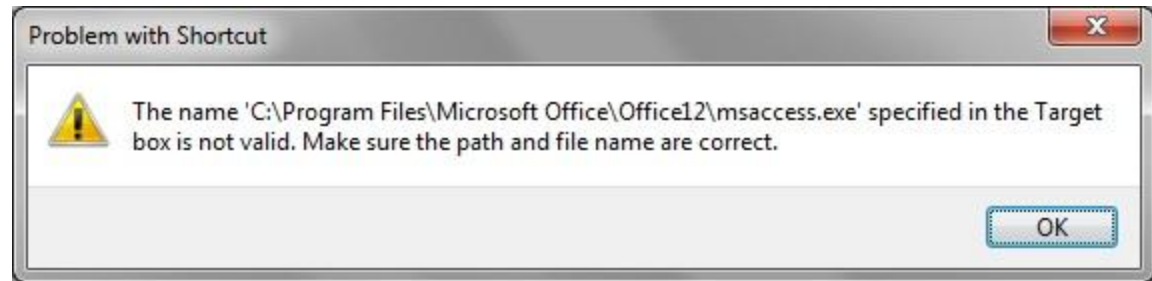
The Bingo Home Edition software is installed in the C:\Bingo Home folder (Typical and recommended location).

To access the Bingo Home Edition Properties screen depicted in the image at the right, right-click the Bingo Home Edition icon created on your desktop and select properties.

To modify this launch icon to ensure the Bingo Home Edition program opens in the optimum Access 2007 environment, replace the "C:\Bingo Home\bingohome.accdr" text in the Target box (highlighted in the red box) with the following text (including the quotation marks) and Apply that change:
"C:\Program Files\Microsoft Office (x86)\Office12\msaccess.exe" /runtime "C:\Bingo Home\bingohome.accdr"



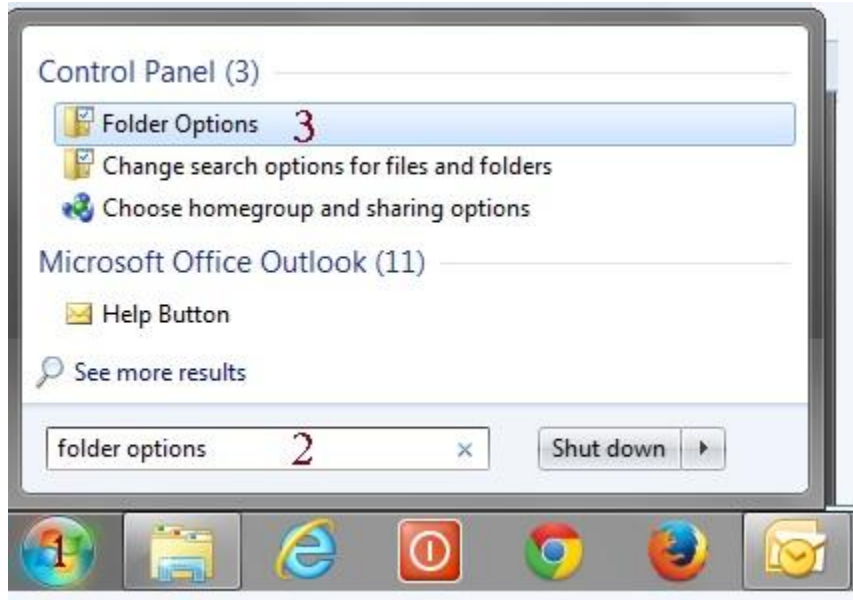
If you receive an error message such as the one on the right, it is likely that the Access 2007 program launch file is installed in the C:\Program Files\Microsoft Office\Office12 folder. Modify the Target appropriately and try again.



You may require Administrator Permission to modify this icon property.

Bingo Home Edition Help - A word about File Extensions

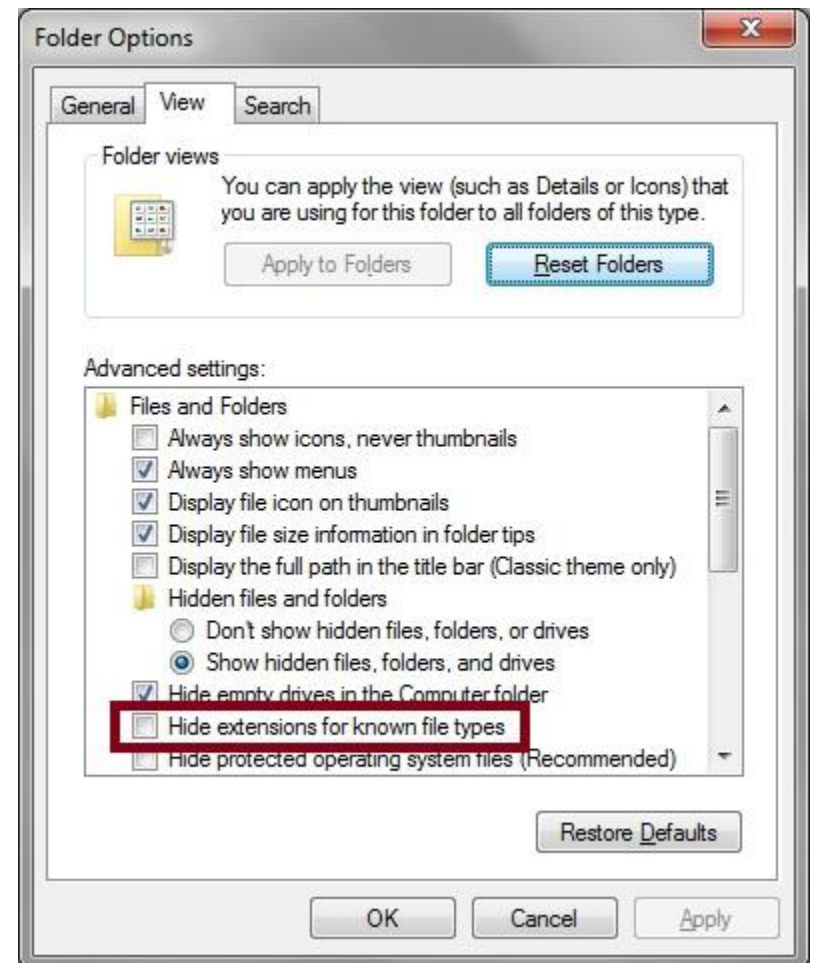
We refer to files throughout our documentation with their complete file name, including their extensions (i.e. setup.exe). Many customers are confused as their computer setting hides extensions. These steps outline how to unhide file extensions for known file types.



You can access Folder Options (Windows 7) by:

1. Selecting the Start button,
2. Typing 'folder options' in the search box, then
3. Selecting Folder Options that should appear somewhere in the list that displays.

When you access the Folder Options, View tab, Files and Folders section, ensure that the check mark is removed from the “Hide extensions for known file types” setting.



The About Bingo Rose screen

The About Bingo Rose screen - Useful information for tech support

The About Bingo Rose screen displays the same information provided in the splash screen when the Bingo Home Edition program is launched.



It contains some basic information about your computer and the environment that the program is operating within. This information might assist Bingo Rose personnel in troubleshooting any unlikely difficulties you experience with the program.

This form can also be opened from the Utility Switchboard. To close it when opened in this fashion, simply click on the form (anywhere but on the link to the Bingo Rose website).

Should you need to look up the Bingo Rose website address, there is a link to <http://www.BingoRose.biz> provided on this form.

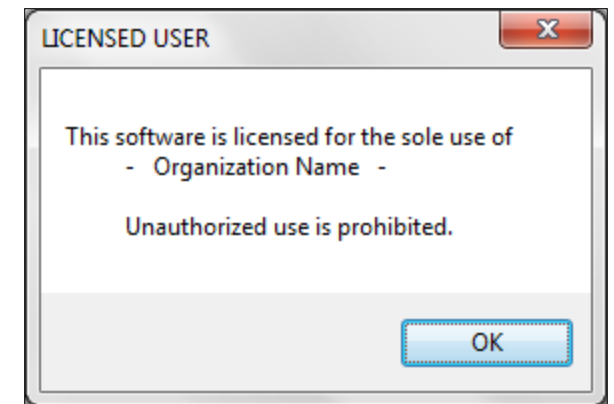
The Bingo Rose License screen

The Bingo Rose License screen - Registration / Software License information

The Bingo Home Edition software is licensed for the enjoyment and sole use of a single organization. An Organization name must be provided at time of purchase. A License number will be provided in an email sent following purchase that is unique to that organization. Both the provided Organization name and the License number listed in that email must be entered exactly as indicated to gain access to the software when it is first run. Incorrect entries may result in the software terminating, necessitating re-launch to access this software registration form.

The Organization name that is provided at time of purchase is an important element of the software licensing process. This name will be displayed at the top of the software main screen.

Each time the software is launched, a Licensed User notification will appear.



To review your license information, the software registration form can be opened by selecting the License button on the Utility Switchboard.

Miscellaneous Policy

Bingo Rose - We want our customers to be happy.

Return Policy

Due to the nature of our products, no returns are accepted except for defective items. Items found to be defective when returned to Bingo Rose will be replaced at no cost. The customer is responsible for shipping costs associated with the return of the defective item.

If the item is found to be not defective, the customer is responsible for the cost of returning the item back to them.

An Authorization Number must be provided by Bingo Rose prior to such return. Please use either the Contact Form or an email message to sales@bingorose.biz to initiate any return efforts.

We make every effort to fully describe our products online. If in doubt, please contact Bingo Rose prior to purchase to make sure your questions are answered. Take advantage of the FREE DEMO of our Bingo Home Edition program, including our offer to walk you through the software's features via a phone session, to make sure the program meets your needs and performs correctly on your equipment before you buy!

Privacy

Your privacy is important to us. This privacy policy sets out how Bingo Rose uses and protects any information that you give Bingo Rose when you use our website or communicate with us by phone or email.

Bingo Rose is committed to ensuring that your privacy is protected. Should we ask you to provide certain information by which you can be identified when using our website, then you can be assured that it will only be used in accordance with this privacy statement.

Bingo Rose may change this policy from time to time by updating this policy on our website. You should check that policy page from time to time to ensure that you are happy with any changes. This policy is effective from June 26, 2010.

What we collect

We may collect the following information:

- Name(s)
- Organization name
- Contact information including address, phone numbers, email address
- Other information relevant to customer surveys and/or offers
- History record of our communications

What we do with the information we gather

We require this information to understand your needs and provide you with a better service, and in particular for the following reasons:

- Internal record keeping.
- We may use the information to improve our products and services.
- We may periodically send promotional emails about new or updated products, special offers, or other information which we think you may find interesting using the email address which you have provided.

- From time to time, we may also use your information to contact you for market research purposes. We may contact you by email, phone or mail. We may use the information to customize the website according to your interests.

We respect your privacy. Should you no longer wish to receive infrequent product information / update email from Bingo Rose, simply send us an email and we will annotate our files accordingly. Likewise, if you do wish to continue to allow us to support you to our best ability, be sure to keep us informed of any new contact information as it becomes available.

General Terms and Conditions

We welcome you to visit our website. If you continue to browse and use our website you are agreeing to comply with and be bound by the following terms and conditions of use, which together with our privacy policy govern Bingo Rose's relationship with you in relation to the website.

The term 'Bingo Rose' or 'us' or 'we' refers to the owner of the website whose registered office is in Manitoba, Canada. Our company registration number is 99181183. The term 'you' refers to the user or viewer of our website / software.

The use of our website is subject to the following terms of use:

- The content of the pages of our website is for your general information and use only. It provides information about our products and services, and is used to market and sell to customers, and to provide after-sales support. It is subject to change without notice.
- Neither we nor any third parties provide any warranty or guarantee as to the accuracy, timeliness, performance, completeness or suitability of the information and materials found or offered on our website for any particular purpose. You acknowledge that such information and

materials may contain inaccuracies or errors and we expressly exclude liability for any such inaccuracies or errors to the fullest extent permitted by law.

- Your use of any information or materials on our website is entirely at your own risk, for which we shall not be liable. It shall be your own responsibility to ensure that any products, services or information available through our website meet your specific requirements.
- Our website contains material which is owned by or licensed to us. This material includes, but is not limited to, the design, layout, look, appearance and graphics. Reproduction is prohibited other than in accordance with the copyright notice, which forms part of these terms and conditions.
- All trademarks reproduced on our website which are not the property of, or licensed to, the operator are acknowledged on the website.
- Unauthorized use of our website may give rise to a claim for damages and/or be a criminal offence.
- From time to time our website may also include links to other websites. These links are provided for your convenience to provide further information. They do not signify that we endorse the website(s). We have no responsibility for the content of the linked website(s).
- You may not create a link to our website from another website or document without prior written consent from Bingo Rose.
- Your use of our website and any dispute arising out of such use of the website is subject to the laws of the Province of Manitoba, Canada.

Our Product Line

All Bingo Rose software programs have been developed and compiled using Microsoft Office Access 2007 which provides a rich platform for developing database management solutions. The Microsoft Office Access 2007 Runtime enables us to distribute Access 2007 applications to users who do not have the full version of Access 2007 installed on their computers. This runtime will be installed as part of each Bingo Rose program setup.

NOTE: A Windows Operating System is required. All Bingo Rose software requires a minimum of 1366 X 768 screen resolution both on the computer and any attached projection devices.

Please visit <http://www.BingoRose.biz> for complete product descriptions.

Available Software (Download Only)

[Bingo Hall Plus](#) - Comprehensive and flexible Bingo software solution (Try the [demo](#) before you buy !)

[Bingo Caller](#) - 75 or 90 ball Bingo Caller with RNG (random number generator)

[Bingo Flashboard \(Basic\)](#) - 75 ball Bingo Caller (requires ball delivery system)

[Bingo Home](#) - Unique Bingo software designed primarily for individual use (like solitaire) with RNG

[DINGO \(Bingo for the Deaf\)](#) - Uniquely designed Bingo for the Deaf community

[Pokeno Plus](#) - Unique Bingo alternative and replacement for the standard POKENO game board

[Chase the Ace](#) - Unique Chase the Ace software.

Visit our website for details of new, upgraded, or free software.

Licensing

The Bingo Hall Plus, Bingo Caller, Bingo Flashboard (Basic), Bingo Home Edition, Chase the Ace, and DINGO (Bingo for the Deaf) programs are licensed for single organization use. The Organization Name must be provided at time of purchase. The same Organization Name must be used in conjunction with a License number (provided with the installation instructions) when the program is first used to register the licensee and record the Organization Name for display on the main screen.

The Pokeno Plus software is licensed for individual use. The licensee's name must be registered into the program when it is first used.

Enjoy secure checkout with PayPal

PayPal is an online payment solution. It enables any individual or business with an e-mail address to securely, easily and quickly send and receive payments online. PayPal's service builds on the existing financial infrastructure of bank accounts and credit cards and utilizes the world's most advanced proprietary fraud prevention systems to create a safe, global, real-time payment solution.

[Tell a friend about Bingo Rose software !](#)
